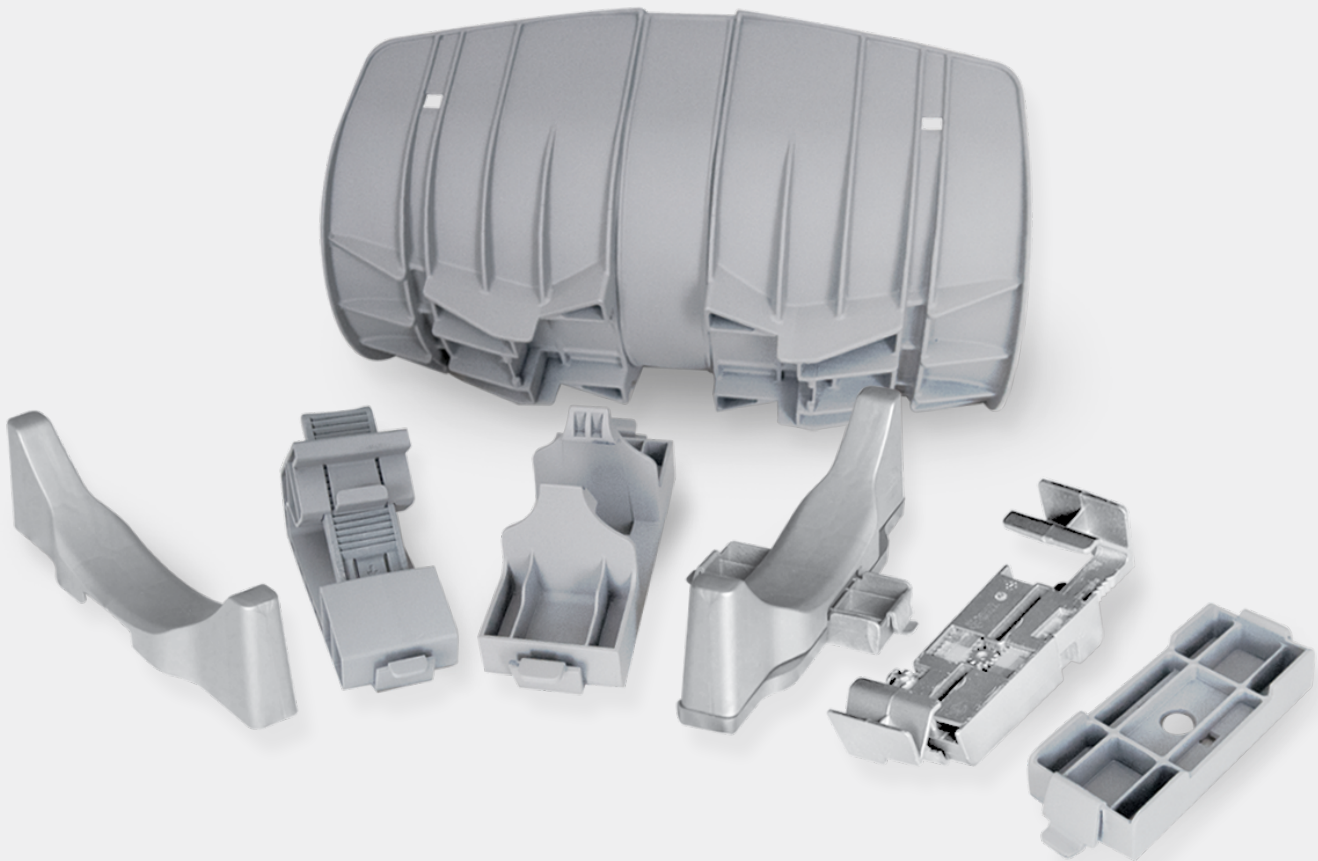


Building connections that last™



Anvil® Shields

Shield System for Insulated Piping



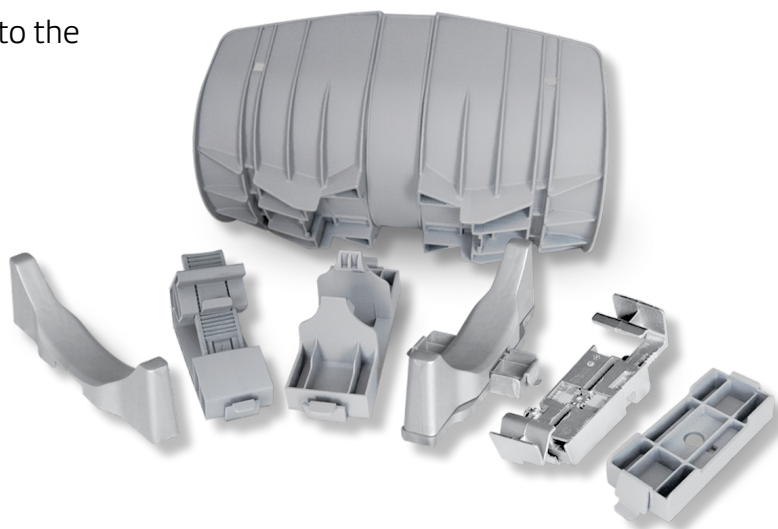


Anvil universal shield and components – adapt to your needs.

The Anvil Shield solution is adaptable to different types of hanger and structural installation conditions. The shields adapt to work in clevis hanger, strut, steel angle, I-beam or floor mount applications. The adapters quickly connect to the shield to make it functional for the specific installation requirement, eliminating any an issue of compatibility.

Anvil Shields makes the installer's job easier while standardizing piping installations and improving performance and appearance.

Whether you have a retrofit, repair or new construction project, Anvil Shields is a fast installation with no tools required.



Fewer SKU's required in inventory

- Simply change out adapters for multiple uses of one part

Tool-free installation

- One click is all it takes

Fastest installation in the industry

- 40% faster than metal shields and 80% faster than clamps and collars

Maintains pipe insulation properties

- Permanent solution to displacement of pipe support

Keeps thermal bridge intact

- Prevents insulation damage and compression

Maintains liquid line in place

- Minimizes refrigerant leaks



asc-es.com

Building connections that last™

Anvil universal shield, clevis adapter, strut adapter, strut stabilisator, i-beam adapter and floor adapter

Fig. 30

Universal Shield

- Size range – up to 12⁵/₈" O.D. Insulation
- UV Resistant Polypropylene 20% Glass Filled
- Operating temperature between –40°F to 178°F (–40°C to 81°C)
- Gray
- Support of insulated horizontal refrigeration, air conditioning and plumbing pipe
- Install on Fig. 260 clevis hanger or clip into Fig. 32, 33, 34, 36, or 37. When installed with Fig. 260 clevis hanger secure with figure



Fig. 32

Universal Shield Strut Adapter

- Size range – 1⁵/₈" x 1⁵/₈" and 1³/₁₆" x 1⁵/₈" Strut Channel
- UV Resistant Polypropylene
- Operating temperature between –40°F to 178°F (–40°C to 81°C)
- Gray
- Support of insulated horizontal refrigeration, air conditioning and plumbing pipe when used with Fig. 30
- Clip into the Fig. 30 and then clip directly on Anvil-Strut™
- AS200 1⁵/₈" x 1⁵/₈" and AS500 1³/₁₆" x 1⁵/₈" strut channel

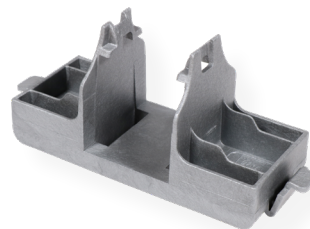


Fig. 31

Universal Shield Celvis Adapter

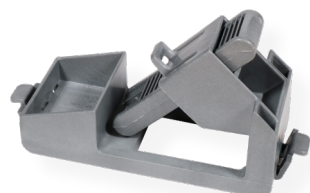
- Size range – from 2" – 12" clevis (Fig. 260) When used with Fig. 30.
- UV Resistant Polypropylene Copolymer (Size F 20% Glass Filled)
- Operating temperature between –40°F to 178°F (–40°C to 81°C)
- Gray
- Support of insulated horizontal refrigeration, air conditioning, and plumbing pipe when used with Fig. 30
- After installation of Fig. 30 with Fig. 260 clevis hanger, clip into the bottom of the Fig. 30 in order to secure the Fig. 26



Fig. 33

Universal Shield Angle Adapter

- Size range – 1/2" to 2⁵/₈" Steel Angle
- UV Resistant Polypropylene 20% Glass Filled
- Operating temperature between –40°F to 178°F (–40°C to 81°C)
- Gray
- Support of insulated horizontal refrigeration, air conditioning, and plumbing pipe when used with Fig. 30
- Clip into the Fig. 30 and then clip directly on steel angle or C-channel



ANVIL
An ASC Engineered Solution

Anvil universal shield, clevis adapter, strut adapter, strut stabiliser, i-beam adapter and floor adapter

Fig. 34

Universal Shield Strut Stabiliser

- Size range – Fig. 34 G fits the “g” size Universal Shield (Fig. 30 G) Fig. 34 H fits the “h” size Universal Shield (Fig. 30 H)
- UV Resistant Polypropylene 20% Glass Filled
- Operating temperature between –40°F to 178°F (–40°C to 81°C)
- Gray
- Support of insulated horizontal refrigeration, air conditioning and plumbing pipe when used with Fig. 30 & Fig. 31 Center under Fig. 30. Clip Fig. 31 over the Strut Stabiliser into the Fig. 30 in order to secure it

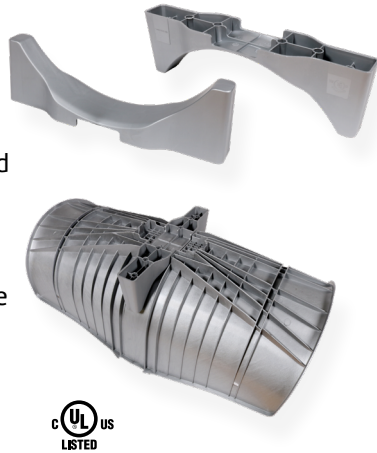


Fig. 36

Universal Shield Insulations Cover

- Size range – 3.5" to 8.87" beam flange width
- UV Resistant Polypropylene 20% Glass Filled
- Operating temperature between –40°F to 178°F (–40°C to 81°C)
- Gray
- Support of insulated horizontal refrigeration, air conditioning and plumbing pipe when used with Fig. 30
- Clip into the Fig. 30 and then clip directly on an I-Beam

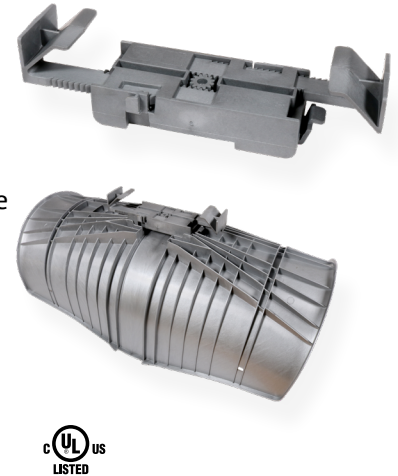


Fig. 35

Universal Shield Floor Adapter

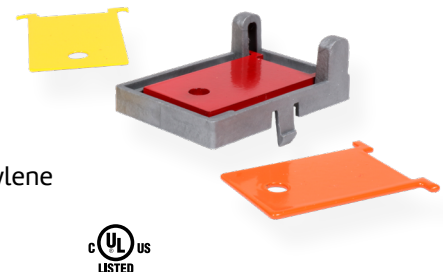
- Size range – One size fits all
- UV Resistant Polypropylene 20% Glass Filled
- Operating temperature between –40°F to 178°F (–40°C to 81°C)
- Gray
- Support of insulated horizontal refrigeration, air conditioning and plumbing pipe when used with Fig. 30, Fig. 31, and Fig. 34
- Center under Fig. 30 and Fig. 34. Clip Fig. 31 over the Floor Adapter into the Fig. 30 in order to secure it



Fig. 37

Universal Shield Shock Detector

- Size range – Fits Anvil Fig. 31 Universal Shield Clevis Adapter
- UV Resistant Polypropylene 20% Glass Filled. (Carbon Steel Flags)
- Operating temperature between –40°F to 178°F (–40°C to 81°C)
- Gray
- Magnetic shock detection device provides a visual indication that the piping system has experienced accelerations of various magnitudes
- Clip body into the Fig. 31. Choose the specified flag color and insert into the Fig. 37 Body. The flag should then be held in place by the magnet



Anvil strut shield is ideal to protect insulated pipes.

Anvil strut shield is designed to allow for pipe movement due to expansion within the support, eliminating common problems that occur with traditional pipe saddles such as; rotation, displacement, and thermal insulation damage.

Anvil Strut Shield is designed to accommodate movement of the pipe within the hanger generated by thermal expansion and vibration. With its unique sliding design at each end, Anvil Strut Shield easily and effectively cradles and protects pipe and insulation allowing them to expand and vibrate without damaging the insulation.



Tool-free installation

- One click is all it takes

Fastest installation in the industry

- 60% faster than metal shields and 80% faster than clamps and collars

Maintains pipe insulation properties

- Permanent solution to displacement of pipe support

Keeps thermal bridge intact

- Prevents insulation damage and compression

Maintains liquid line in place

- Minimizes refrigerant leaks



ANVIL
An ASC Engineered Solution

Anvil Insulation covers and strut shields

Fig. 38
Universal Shield
Insulation Cover

- Size range – up to 12 ⁵/₈" O.D. Insulation
- UV Resistant Polypropylene 20% Glass Filled
- Operating temperature between –40°F to 178°F (–40°C to 81°C)
- Gray
- Cut to desired size. Place over insulation and line up mounting notches with Fig. 30
- Secure insulation shield with tie wraps



Fig. 21
Strut Shield
Insulations Cover

- Size range – up to 8 ¹/₄" O.D. Insulation
- UV Resistant Polypropylene
- Operating temperature between –40°F to 178°F (–40°C to 81°C)
- Black or White
- Cut to desired size. Place over insulation and line up mounting notches with Fig. 20. Secure insulation shield with tie wraps
- Can also be used with Fig. 30 Universal Shield



Fig. 20
Strut Shield

- Size range – up to 8 ¹/₂" O.D. Insulation
- UV Resistant Polypropylene
- Copolymer (Size F 20% Glass Filled)
- Operating temperature between –40°F to 178°F (–40°C to 81°C)
- Black or White
- Support of insulated horizontal refrigeration, air conditioning, and plumbing pipe
- Clip directly on Anvil-Strut™ AS200 1 ⁵/₈" x 1 ⁵/₈" strut channel



This image shows a single sheet of white paper with horizontal ruling lines. The lines are evenly spaced and run across the width of the page. There are no margins, text, or other markings on the paper.



About ASC Engineered Solutions

ASC Engineered Solutions (formerly Anvil International & Smith-Cooper International) is defined by quality—in its products, services and support. With nearly 2,000 employees, the company's portfolio of precision-engineered piping support, valves and connections provides products to more than 4,000 customers across industries, such as mechanical, industrial, fire protection, oil and gas, and commercial and residential construction. Its portfolio of leading brands includes ABZ Valve®, AFCON®, Anvil®, Anvil EPS, Basic-PSA, Beck®, Catawissa, Cooplet®, FlexHead®, FPPI®, Gruvlok®, J.B. Smith, Merit®, NAP®, Quadrant®, SCI®, Sharpe®, SlideLOK®, SPF®, SprinkFLEX®, Trenton Pipe, and VEP. With headquarters in Oak Brook, IL, ASC also has ISO 9001:2015 certified production facilities in PA, TN, IL, TX, AL, LA, KS, and RI.



asc-es.com

Building connections that last™