

# FIG. MT-2 Grooved Mechanical Branch Tee



Mechanical branch connections for reducing branch outlets without welding. The MT-2 is a bolted saddle type fitting with grooved outlets. Design assures superior sealing, full pipe support, excellent stability and easy installation.

For the latest UL/ULC listed, LPCB, VdS and FM Approved pressure ratings versus pipe schedule, see [www.anvilintl.com](http://www.anvilintl.com) or contact your local Anvil Representative.



For Listings/Approval Details and Limitations, visit our website at [www.anvilintl.com](http://www.anvilintl.com) or contact an Anvil® Sales Representative.

## MATERIAL SPECIFICATIONS

### HOUSING:

Ductile Iron conforming to ASTM A-536, Grade 65-45-12

### ANSI BOLTS & HEAVY HEX NUTS:

Heat treated, oval-neck track head bolts conforming to ASTM A-183 Grade 2 with a minimum tensile strength of 110,000 psi and heavy hex nuts of carbon steel conforming to ASTM A-563 Grade A or Grade B, or SAE J995 Grade 2. Bolts and nuts are provided zinc electroplated as standard.

### METRIC BOLTS & HEAVY HEX NUTS:

Heat treated, zinc electroplated oval-neck track head bolts made of carbon steel with mechanical properties per ISO 898-1 Class 8.8. Hex nuts and bolts are zinc electroplated followed by a yellow chromate dip.

### COATINGS:

- Rust inhibiting paint Color: ORANGE (standard)
  - Hot Dipped Zinc Galvanized (optional)
  - Other available options: Example: RAL3000 or RAL9000 Series
- For other coating requirements contact an Anvil Representative.

### LUBRICATION:

- Standard Gruvlok
- Gruvlok Xtreme™ required for dry pipe systems and freezer applications.

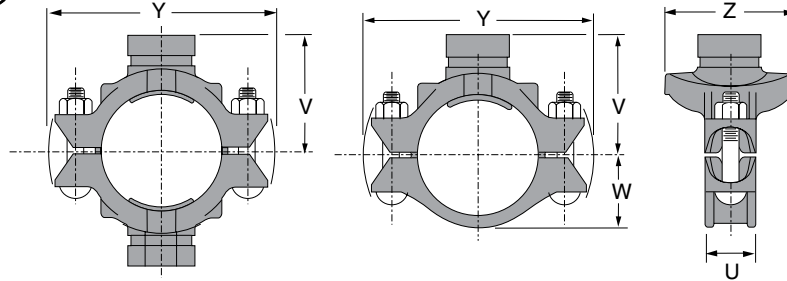
### GASKETS: Materials

Properties as designated in accordance with ASTM D-2000.

- Grade "E" EPDM (Green color code)  
-40°F to 230°F (Service Temperature Range)(-40°C to 110°C)  
Recommended for water service, diluted acids, alkalies solutions, oil-free air and many chemical services.  
NOT FOR USE IN PETROLEUM APPLICATIONS.

PROJECT INFORMATION		APPROVAL STAMP	
Project:		<input type="checkbox"/> Approved	
Address:		<input type="checkbox"/> Approved as noted	
Contractor:		<input type="checkbox"/> Not approved	
Engineer:		Remarks:	
Submittal Date:			
Notes 1:			
Notes 2:			

# FIG. MT-2 Grooved Mechanical Branch Tee



**WARNING**  
For dry pipe systems and freezer applications lubrication of the gasket is required, Gruvlok® Xtreme™ Lubricant is required.

## MT-2 GROOVED MECHANICAL BRANCH TEE (TABLE CONTINUES TO NEXT PAGE)

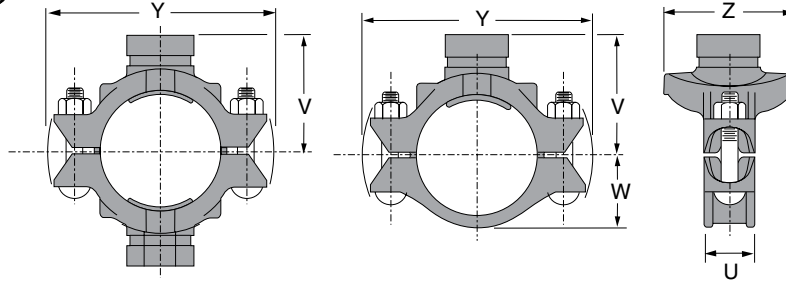
Nominal Size	O.D.	Hole Dimensions		Max. Working Pressure ▲	Dimensions					Bolt Size	Approx. Wt. Ea.
		Min. Diameter	Max. Diameter		U	V	W	Y	Z		
In./DN(mm)	In./mm	In./mm	In./mm	PSI/bar	In./mm	In./mm	In./mm	In./mm	In./mm	In./mm	Lbs./Kg
3 O.D. x 1 1/4 76.1 x 32	2.996 x 1.660 76.1 x 42.4	2 51	2 1/8 54	300 20.7	2 51	3 1/16 81	1 1/8 48	5 1/16 145	3 3/8 86	1/2 x 2 3/4	3.6 1.6
3 O.D. x 1 1/2 76.1 x 40	2.996 x 1.900 76.1 x 48.3	2 51	2 1/8 54	300 20.7	2 51	3 1/16 81	1 1/8 48	5 1/16 145	3 3/8 86	1/2 x 2 3/4	3.6 1.6
3 x 1 1/2 80 x 40	3.500 x 1.900 88.9 x 48.3	2 51	2 1/8 54	300 20.7	2 51	3 7/16 87	2 1/8 55	6 1/4 159	3 1 5/16 99	1/2 x 2 3/4	3.8 1.7
3 x 2 80 x 50	3.500 x 2.375 88.9 x 60.3	2 1/2 64	2 5/8 67	300 20.7	2 51	3 7/16 87	2 1/8 55	6 1/4 159	3 1 5/16 99	1/2 x 2 3/4	4.4 2.0
4 x 1 1/2 100 x 40	4.500 x 1.900 114.3 x 48.3	2 51	2 1/8 54	300 20.7	2 51	4 102	2 5/8 67	7 1/4 184	3 1 3/16 97	1/2 x 2 3/4	4.6 2.1
4 x 2 100 x 50	4.500 x 2.375 114.3 x 60.3	2 1/2 64	2 5/8 67	300 20.7	2 51	4 102	2 5/8 67	7 1/4 184	4 1/2 115	1/2 x 2 3/4	4.8 2.2
4 x 2 1/2 100 x 65	4.500 x 2.875 114.3 x 73.0	2 3/4 70	2 7/8 73	300 20.7	2 51	4 102	2 5/8 67	7 1/4 184	4 1/2 115	1/2 x 2 3/4	5.4 2.4
4 x 3 O.D. 100 x 76.1	4.500 x 2.996 114.3 x 76.1	2 3/4 70	2 7/8 73	300 20.7	2 51	4 102	2 5/8 67	7 1/4 184	4 1/2 115	1/2 x 2 3/4	7.6 3.4
4 x 3 100 x 80	4.500 x 3.500 114.3 x 88.9	3 1/2 89	3 5/8 92	300 20.7	2 51	4 1/8 105	2 5/8 67	7 1/4 184	5 1/8 130	1/2 x 2 3/4	7.6 3.4
5 x 2 125 x 50	5.563 x 2.375 141.3 x 60.3	2 1/2 64	2 5/8 67	300 20.7	2 1/4 57	4 3/4 121	3 3/16 81	8 3/16 211	4 1/2 115	5/8 x 4	7.9 3.6
5 x 2 1/2 125 x 65	5.563 x 2.875 141.3 x 73.0	2 3/4 70	2 7/8 73	300 20.7	2 1/4 57	4 3/4 121	3 3/16 81	8 3/16 211	4 1/2 115	5/8 x 4	7.9 3.6
5 x 3 125 x 80	5.563 x 3.500 141.3 x 88.9	3 1/2 89	3 3/8 92	300 20.7	2 1/4 57	5 127	3 3/16 81	8 3/16 211	5 1/8 130	5/8 x 4	7.9 3.6
5 1/2 O.D. x 2 139.7 x 50	5.500 x 2.375 139.7 x 60.3	2 1/2 64	2 5/8 67	300 20.7	2 1/4 57	4 5/8 117	3 3/16 81	8 3/16 211	4 1/2 115	5/8 x 4	7.9 3.6
5 1/2 O.D. x 3 O.D. 139.7 x 76.1	5.500 x 2.996 139.7 x 76.1	2 3/4 70	2 7/8 73	300 20.7	2 1/4 57	4 5/8 117	3 3/16 81	8 3/16 211	4 1/2 115	5/8 x 4	7.9 3.6
5 1/2 O.D. x 3 139.7 x 88.9	5.500 x 3.500 139.7 x 88.9	3 1/2 89	3 3/8 92	300 20.7	2 1/4 57	4 7/8 124	3 3/16 81	8 3/16 211	5 1/8 130	5/8 x 4	7.9 3.6
6 x 1 1/4 150 x 32	6.625 x 1.660 168.3 x 42.2	2 51	2 1/8 54	300 20.7	2 1/4 57	5 127	3 3/16 81	9 3/8 238	3 7/8 98	5/8 x 4	8.0 3.6
6 x 1 1/2 150 x 40	6.625 x 1.900 168.3 x 48.3	2 51	2 1/8 54	300 20.7	2 1/4 57	5 1/8 130	3 1 1/16 94	9 3/8 238	3 7/8 98	5/8 x 4	8.0 3.6
6 x 2 150 x 50	6.625 x 2.375 168.3 x 60.3	2 1/2 64	2 5/8 67	300 20.7	2 1/4 57	5 1/8 130	3 1 1/16 94	9 3/8 238	4 1/16 112	5/8 x 4	8.0 3.6
6 x 2 1/2 150 x 65	6.625 x 2.875 168.3 x 73.0	2 3/4 70	2 7/8 73	300 20.7	2 1/4 57	5 1/8 130	3 1 1/16 94	9 3/8 238	4 1/16 112	5/8 x 4	8.0 3.6
6 x 3 O.D. 150 x 76.1	6.625 x 2.996 168.3 x 76.1	2 3/4 70	2 7/8 73	300 20.7	2 1/4 57	5 1/8 130	3 1 1/16 94	9 3/8 238	4 1/16 112	5/8 x 4	9.7 4.4
6 x 3 150 x 80	6.625 x 3.500 168.3 x 88.9	3 1/2 89	3 3/8 92	300 20.7	2 1/4 57	5 1/4 133	3 1 1/16 94	9 3/8 238	5 3/8 143	5/8 x 4 M16 x 108	9.7 4.4

All sizes may be used as mechanical crosses.

Outlet branch is machined per standard cut groove specification.

▲ – Working Pressure Ratings are for reference only and based on Sch. 40 pipe. For the latest UL/ULC, FM, VdS and LPCB pressure ratings versus pipe schedule, please visit [anvilintl.com](http://anvilintl.com) or contact your local Anvil Representative.

# FIG. MT-2 Grooved Mechanical Branch Tee



**WARNING**  
For dry pipe systems and freezer applications lubrication of the gasket is required, Gruvlok® Xtreme™ Lubricant is required.

## MT-2 GROOVED MECHANICAL BRANCH TEE (CONTINUED FROM PREVIOUS PAGE)

Nominal Size	O.D.	Hole Dimensions		Max. Working Pressure ▲	Dimensions					Bolt Size	Approx. Wt. Ea.
		Min. Diameter	Max. Diameter		U	V	W	Y	Z		
In./DN(mm)	In./mm	In./mm	In./mm	PSI/bar	In./mm	In./mm	In./mm	In./mm	In./mm	In./mm	Lbs./Kg
6 x 4 150 x 100	6.625 x 4.500 168.3 x 114.3	4½ 114	4⅝ 117	300 20.7	2¼ 57	5⅜ 137	3⅞ 94	9⅞ 238	6½ 165	⅝ x 4 M16 x 108	3.6 1.6
6½ O.D. x 1¼ 165.1 x 32	6.500 x 1.660 165.1 x 42.2	2 51	2⅛ 54	300 20.7	2¼ 57	5 127	3⅞ 93	9¼ 235	3⅞ 98	⅝ x 4	3.2 1.5
6½ O.D. x 1½ 165.1 x 40	6.500 x 1.900 165.1 x 48.3	2 51	2⅛ 54	300 20.7	2¼ 57	5½ 130	3⅞ 93	9¼ 235	3⅞ 98	⅝ x 4	7.5 3.4
6½ O.D. x 2 165.1 x 50	6.500 x 2.375 165.1 x 60.3	2½ 64	2⅝ 67	300 20.7	2¼ 57	5½ 130	3⅞ 93	9¼ 235	4⅞ 112	⅝ x 4	8.0 3.6
6½ O.D. x 3 O.D. 165.1 x 76.1	6.500 x 2.996 165.1 x 76.1	2¾ 70	2⅞ 73	300 20.7	2¼ 57	5⅞ 130	3⅞ 93	9¼ 235	4⅞ 112	⅝ x 4	8.0 3.6
6½ O.D. x 3 165.1 x 80	6.500 x 3.500 165.1 x 88.9	3½ 89	3⅞ 92	300 20.7	2¼ 57	5¼ 133	3⅞ 93	9¼ 235	5⅞ 143	⅝ x 4	9.7 4.4
6½ O.D. x 4 165.1 x 100	6.500 x 4.500 165.1 x 114.3	4½ 114	4⅝ 117	300 20.7	2¼ 57	5⅞ 137	3⅞ 93	9⅞ 238	6½ 165	⅝ x 4	13.6 6.2
8 x 2 200 x 50	8.625 x 2.375 219.1 x 60.3	2¾ 70	2⅞ 73	300 20.7	2½ 64	6⅞ 156	4⅞ 124	12⅞ 314	4⅞ 111	¾ x 4¼	10.2 4.6
8 x 2½ 200 x 65	8.625 x 2.875 219.1 x 73.0	2¾ 70	2⅞ 73	300 20.7	2½ 64	6⅞ 156	4⅞ 124	12⅞ 314	4⅞ 111	¾ x 4¼	10.4 4.7
8 x 3 O.D. 200 x 76.1	8.625 x 2.996 219.1 x 76.1	2¾ 70	2⅞ 73	300 20.7	2½ 64	6⅞ 156	4⅞ 124	12⅞ 314	5¼ 146	¾ x 4¼	10.6 4.8
8 x 3 200 x 80	8.625 x 3.500 219.1 x 88.9	3½ 89	3⅞ 92	300 20.7	2½ 64	6⅞ 162	4⅞ 124	12⅞ 314	5¼ 146	¾ x 4¼	11.1 5.0
8 x 4 200 x 100	8.625 x 4.500 219.1 x 114.3	4½ 114	4⅝ 117	300 20.7	2½ 64	6¼ 159	4⅞ 124	12⅞ 314	6⅞ 168	¾ x 4¼	15.5 7.0

All sizes may be used as mechanical crosses.

Outlet branch is machined per standard cut groove specification.

▲ - Working Pressure Ratings are for reference only and based on Sch. 40 pipe. For the latest UL/ULC, FM, VdS and LPCB pressure ratings versus pipe schedule, please visit [anvilintl.com](http://anvilintl.com) or contact your local Anvil Representative.