

## Fig. 243

## Pipe Strap

**Size Range:** 1/2" through 6" pipe

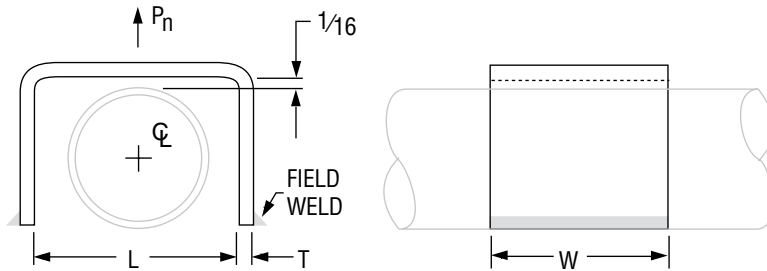
**Material:** Carbon steel

**Finish:** Plain

**Service:** Restraint of pipe in specified direction while permitting movement in non-restrained direction.

**Maximum Temperature:** 650° F

**Ordering:** Specify figure number, name, and pipe size. Larger sizes available upon request.



**FIG. 243: LOADS (LBS) • WEIGHT (LBS) • DIMENSIONS (IN)**

Pipe Size	L	T	W	Rated Load P <sub>n</sub>	Weight
1/2	3	1/4	2	600	0.71
3/4	3 1/2				0.84
1	4				0.98
1 1/4	4 1/2	3/8	3	1,500	2.64
1 1/2	5				2.94
2	5 1/2				3.39
2 1/2	6	1/2	4	2,500	5.20
3	6 1/2				7.93
4	7 1/2				9.63
6	9 3/4				19.97
			6	3,000	

PROJECT INFORMATION		APPROVAL STAMP	
Project:		<input type="checkbox"/> Approved	
Address:		<input type="checkbox"/> Approved as noted	
Contractor:		<input type="checkbox"/> Not approved	
Engineer:		Remarks:	
Submittal Date:			
Notes 1:			
Notes 2:			