

Fig. 126

One-Hole Clamp

Size Range: 3/8" through 4"

Material: Malleable iron

Finish: Plain or Zinc Plated (Hot-Dip Galvanized optional)

Service: For support of standard conduit, cable and steel pipe on walls or sides of beams.

Not recommended for use horizontally on ceilings, bottoms of beams and similar installations since the factor of safety is greatly reduced when so used.

Maximum Temperature: 450° F

Ordering: Specify pipe size, figure number, name and finish. Specify nominal size of conduit or pipe or outside diameter of lead cable with which the clamp is to be used.

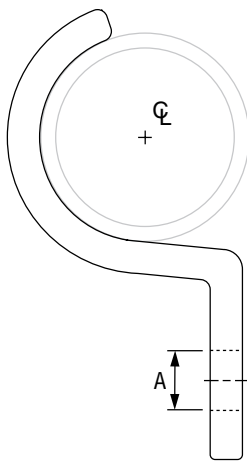


FIG. 126: WEIGHTS (LBS) • DIMENSIONS (IN)

Pipe Size	Cable Size or Outside Dia. of Conduit ■	Weight	Dia. of Hole - A	Size Screw/Bolt
3/8	0.67	0.03	1/4	No. 10
1/2	0.84	0.03	5/16	1/4
3/4	1.05	0.05		
1	1.31	0.09	3/8	3/8
1 1/4	1.66	0.12		
1 1/2	1.90	0.16	7/16	5/8
2	2.37	0.25		
2 1/2	2.87	0.49	1 1/16	5/8
3	3.50	0.82		
4	4.50	1.30	3/4	

■ Screws or bolts not included

PROJECT INFORMATION		APPROVAL STAMP	
Project:		<input type="checkbox"/> Approved	
Address:		<input type="checkbox"/> Approved as noted	
Contractor:		<input type="checkbox"/> Not approved	
Engineer:		Remarks:	
Submittal Date:			
Notes 1:			
Notes 2:			