

Fig. 291

Clevis Pin with Cotters

Size Range: 1/2" through 4"

Material: Carbon steel

Finish: Plain or Zinc Plated (Hot-Dip Galvanized optional)

Maximum Temperature: 650° F

Service: For use with type C variable spring hanger, type C constant support (Fig. 81-H only) and Fig. 66 welded beam attachment.

Ordering: Specify pin diameter, figure number, name, finish and if cotter pins are required.

Note: The acceptability of galvanized coatings at temperatures above 450°F is at the discretion of the end user.

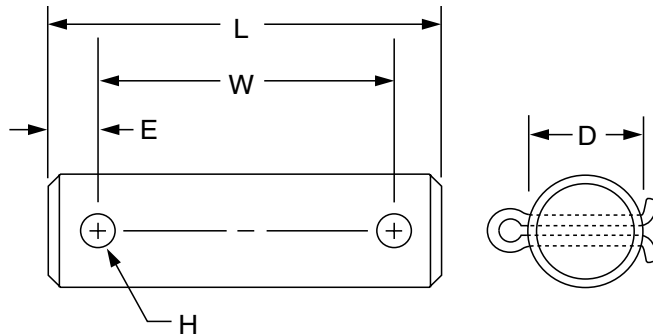


FIG. 291: LOADS (LBS) • WEIGHTS (LBS) • DIMENSIONS (IN)

Pin Dia. D	Max Load		Weight	L	W	E	H	Cotter Pin Size
	650° F	750° F						
1/2	730	572	0.12	2 ⁷ / ₈	2 ¹ / ₈	3/8	5/32	1/8 x 1 1/4
5/8	1,350	1,057	0.18	3 ¹ / ₈	2 ³ / ₈		7/32	3/16 x 1 1/2
3/4	2,160	1,691	0.29	3 ⁵ / ₈	2 ⁷ / ₈			
7/8	3,230	2,529	0.47	4 ¹ / ₄	3 ¹ / ₂			
1	4,480	3,508	0.67	4	3 ³ / ₄			
1 1/8	5,900	4,620	1.00	4 ³ / ₄	4	1/2	9/32	1/4 x 2 1/2
1 3/8	9,500	7,439	2.10	5 ³ / ₈	4 ³ / ₈		5/8	3/8
1 5/8	13,800	10,805	3.30	6	5	3/4		
1 7/8	18,600	14,564	4.80	7 ¹ / ₈	5 ⁷ / ₈		3/8	3/8
2 1/4	24,600	19,262	7.20	7 ⁵ / ₈	6 ³ / ₈	3/4		
2 1/2	32,300	25,291	9.30	7 ⁷ / ₈	6 ⁵ / ₈		3/4	1/2
2 3/4	39,800	31,163	12.50	8 ¹ / ₄	6 ³ / ₄	3/4		
3	49,400	38,680	16.60	8 ¹ / ₂	7		3/4	1/2
3 1/4	60,100	47,058	20.00	8 ³ / ₄	7 ¹ / ₄			
3 1/2	71,900	56,298	23.90	9 ¹ / ₂	8	3/4	1/2	1/2 x 6
3 3/4	84,700	66,320	25.10	9 ³ / ₄	8 ¹ / ₄			
4	98,500	77,125	34.80	9 ³ / ₄	8 ¹ / ₄			

PROJECT INFORMATION		APPROVAL STAMP	
Project:		<input type="checkbox"/> Approved	
Address:		<input type="checkbox"/> Approved as noted	
Contractor:		<input type="checkbox"/> Not approved	
Engineer:		Remarks:	
Submittal Date:			
Notes 1:			
Notes 2:			