

Fig. 157

Extension piece

Size Range: 3/8" through 7/8"

Material: Malleable iron

Finish: Plain or Zinc Plated

Maximum Temperature: 450° F

Service: For attaching hanger rod to various types of building attachments.

Approvals: UL Listed (3/8" - 7/8" rod size) and FM Approved (3/8" & 1/2" rod size).

Installation: May be used to form an integral part of malleable iron beam clamps Fig. 218.

Ordering: Specify rod size, figure number, name and finish.

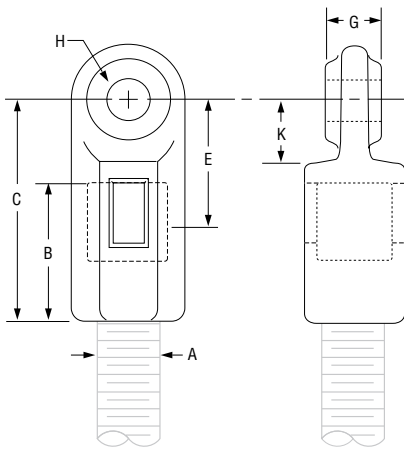


FIG. 157: LOADS (LBS) • WEIGHTS (LBS) • DIMENSIONS (IN)

Rod Size A	Max Load	Weight	B	C	Rod Take-Out E	G	H	K
3/8	730	0.20	1 1/4	2 1/16	1 1/4	1/2	1/2	9/16
1/2	1,350	0.40	1 3/8	2 5/16	1 3/8	5/8		1 1/16
5/8	1,550	0.44	1 1/2	2 7/16	1 7/16		3/4	
3/4	2,100	0.65	1 3/4	2 7/8	1 11/16		7/8	
7/8	2,350	0.78	1 7/8	2	1 3/4	9/16		

PROJECT INFORMATION		APPROVAL STAMP	
Project:		<input type="checkbox"/> Approved	
Address:		<input type="checkbox"/> Approved as noted	
Contractor:		<input type="checkbox"/> Not approved	
Engineer:		Remarks:	
Submittal Date:			
Notes 1:			
Notes 2:			