

Fig. 248: Right Hand Threads

Eye Rod Not Welded

Fig. 248L: Left Hand Threads

Size Range: $\frac{3}{8}$ " through $2\frac{1}{2}$ "

Material: Carbon steel

Finish: Plain or Zinc Plated

Maximum Temperature: 650° F

Features: Through $1\frac{1}{2}$ ", inside diameter of eye will accommodate a bolt diameter $\frac{1}{8}$ " larger than rod diameter; $1\frac{3}{4}$ " and larger, inside diameter of eye will take a bolt diameter $\frac{1}{4}$ " larger than rod diameter.

Ordering: Specify rod diameter, figure number, name, rod length and finish. Specify thread length if other than standard.

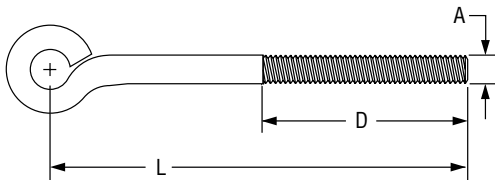


FIG. 248, FIG. 248L: LOADS (LBS) • DIMENSIONS (IN)			
Rod Size A	Standard Rod Thread Length – D	L (min)	Max Load 650° F
$\frac{3}{8}$	2½	4¼	240
$\frac{1}{2}$			
$\frac{5}{8}$		4½	705
$\frac{3}{4}$	3	5½	1,050
$\frac{7}{8}$	3½	6½	1,470
1	4	7¼	1,940
1¼	5	8¼	3,120
1½	6	10	4,650
1¾	7	12	6,380
2	8	14	8,280
2¼	9	15½	10,900
2½	10	17	13,400

PROJECT INFORMATION		APPROVAL STAMP	
Project:		<input type="checkbox"/> Approved	
Address:		<input type="checkbox"/> Approved as noted	
Contractor:		<input type="checkbox"/> Not approved	
Engineer:		Remarks:	
Submittal Date:			
Notes 1:			
Notes 2:			