

Fig. 47

Concrete Single Lug Plate

Size Range: 1/2" through 2"

Material: Carbon steel

Finish: Plain or Hot-Dip Galvanized

Service: Structural attachment to concrete ceiling lug is used in conjunction with Fig. 299 forged steel clevis and anchors of sufficient strength to hold the desired load.

Ordering: Specify rod size, figure number, name and finish.

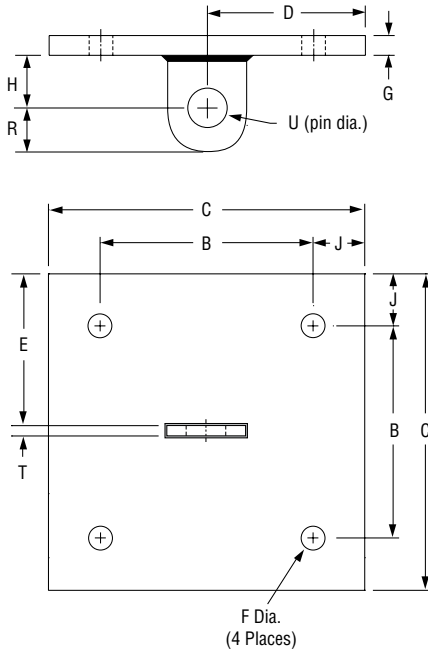


FIG. 47: LOAD (LBS) • WEIGHT (LBS) • DIMENSIONS (IN)

Rod Size A	Max Load ■	Weight	J	B	C	D	E	F	G	H	R	T	U	
1/2	1,350	11.1	1	8	10	5	4 7/8	9/16	3/8	1 1/2	1 1/4	1/4	5/8	
5/8	2,160	14.6					4 13/16	1 1/16					1/2	3/4
3/4	3,230	14.8					5 3/4	1 3/16	3/4	2		1 1/2	1/2	1 1/8
7/8	4,480	22.0					5 11/16	1 5/16	1	3		2	5/8	1 3/8
1	5,900	31.9	2	12	12	6	5 5/8	1 1/8	1 1/4	3	2 1/2	3/4	1 5/8	
1 1/4	9,500	43.8					5 5/8	1 3/8					1 1/4	4
1 1/2	13,800	45.6					5 5/8	1 3/8	1 1/4	4		2 1/4		
1 3/4	18,600	55.7					5 5/8	1 3/8	1 1/4	4		2 1/4		
2	24,600	58.2												

■ Based on the rod diameter only. Rating is subject to the conditions that the concrete and anchors used are of sufficient strength to hold the load.

PROJECT INFORMATION		APPROVAL STAMP	
Project:		<input type="checkbox"/> Approved	
Address:		<input type="checkbox"/> Approved as noted	
Contractor:		<input type="checkbox"/> Not approved	
Engineer:		Remarks:	
Submittal Date:			
Notes 1:			
Notes 2:			