

Fig. 52

Concrete Rod Attachment Plate

Size Range: $\frac{3}{8}$ " through $1\frac{1}{4}$ "

Material: Carbon steel

Finish: Plain or Hot-Dip Galvanized

Service: Structural attachment to concrete ceiling where vertical adjustment is desired. Normally used with threaded rod and nut and anchors of sufficient strength to hold the desired load.

Ordering: Specify rod size, figure number, name and finish.

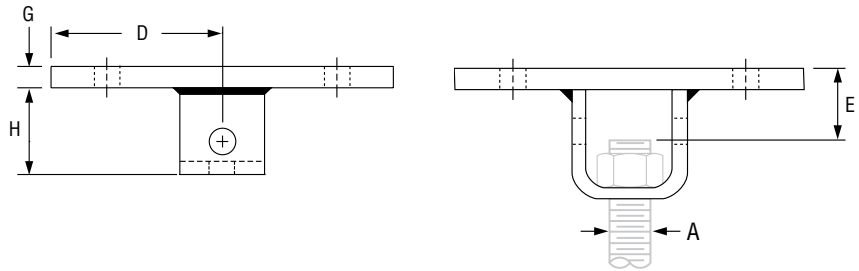
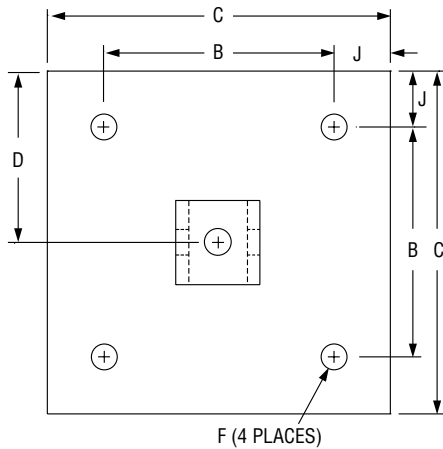


FIG. 52: LOAD (LBS) • WEIGHT (LBS) • DIMENSIONS (IN)

Rod Size A	Max Load ■	Weight	J	B	C	D	E	F	H	G
$\frac{3}{8}$	730	11.6	1	8	10	5	$2\frac{1}{4}$	$\frac{9}{16}$	$2\frac{7}{8}$	$\frac{3}{8}$
$\frac{1}{2}$	1,350	11.6					$2\frac{1}{8}$			
$\frac{5}{8}$	2,160	15.1					$2\frac{1}{4}$	$1\frac{1}{16}$	$3\frac{1}{8}$	
$\frac{3}{4}$	3,230	16.1					$3\frac{1}{8}$			
$\frac{7}{8}$	4,480	16.7					2	12	6	
1	5,900	34.9	$3\frac{5}{8}$	$1\frac{5}{16}$	5					
$1\frac{1}{4}$	9,500	40.9								

■ Based on the rod diameter only. Rating is subject to the conditions that the concrete and anchors used are of sufficient strength to hold the load.

PROJECT INFORMATION		APPROVAL STAMP	
Project:		<input type="checkbox"/> Approved	
Address:		<input type="checkbox"/> Approved as noted	
Contractor:		<input type="checkbox"/> Not approved	
Engineer:		Remarks:	
Submittal Date:			
Notes 1:			
Notes 2:			