

Fig. 49

Concrete Clevis Plate

Size Range: $\frac{3}{8}$ " through $1\frac{3}{4}$ "

Material: Carbon steel

Finish: Plain or Hot-Dip Galvanized with Zinc Plated Fasteners

Service: Structural attachment to concrete ceiling where flexibility is desired. Concrete clevis plate is normally used in conjunction with Fig. 290 weldless eye nut, or Fig. 278 welded eye rod and anchors of sufficient strength to hold the desired load.

Ordering: Specify rod size, figure number, name and finish.

Note: Sizes $\frac{3}{8}$ " through 1" are supplied with bolt and nut. Larger sizes are supplied with pin and cotters.

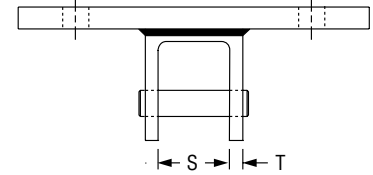
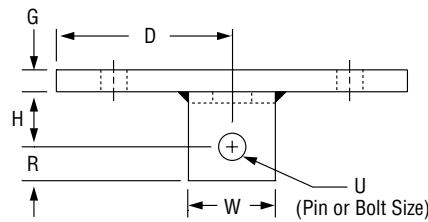
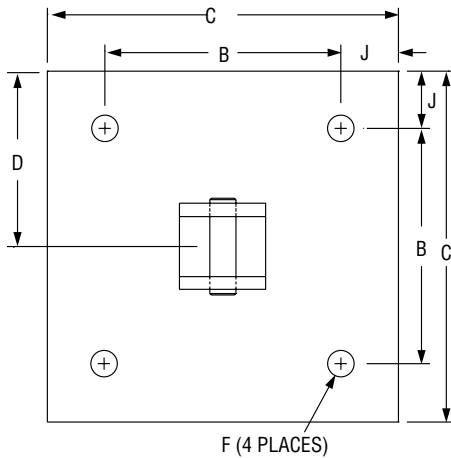


FIG. 49: LOAD (LBS) • WEIGHT (LBS) • DIMENSIONS (IN)

| Rod Size A | Max Load ■ | Weight | J | B | C | D | F | G | H | R | S | T | U | W |
|----------------|------------|--------|---|----|----|---|-----------------|----------------|----------------|----------------|----------------|---------------|----------------|---|
| $\frac{3}{8}$ | 730 | 11.8 | 1 | 8 | 10 | 5 | $\frac{9}{16}$ | $\frac{3}{8}$ | 2 | $\frac{7}{8}$ | $1\frac{1}{4}$ | $\frac{1}{4}$ | $\frac{1}{2}$ | 2 |
| $\frac{1}{2}$ | 1,350 | 11.9 | | | | | | $\frac{5}{8}$ | | | | | | |
| $\frac{5}{8}$ | 2,160 | 15.7 | | | | | $\frac{3}{4}$ | | | | | | | |
| $\frac{3}{4}$ | 3,230 | 16.9 | | | | | $\frac{7}{8}$ | 3 | $1\frac{1}{8}$ | $1\frac{7}{8}$ | $\frac{3}{8}$ | $\frac{7}{8}$ | | |
| $\frac{7}{8}$ | 4,480 | 18.1 | | | | | $1\frac{1}{16}$ | | $\frac{1}{2}$ | $1\frac{1}{4}$ | | 2 | 1 | |
| 1 | 5,900 | 36.9 | 2 | 10 | 12 | 6 | $\frac{13}{16}$ | $\frac{3}{4}$ | 3 | $1\frac{1}{2}$ | $2\frac{1}{2}$ | $\frac{1}{2}$ | $1\frac{1}{8}$ | 3 |
| $1\frac{1}{4}$ | 9,500 | 40.9 | | | | | $\frac{15}{16}$ | | | | | $\frac{5}{8}$ | $1\frac{3}{8}$ | |
| $1\frac{1}{2}$ | 13,800 | 59.8 | | | | | $1\frac{1}{8}$ | 1 | 4 | $2\frac{1}{2}$ | 3 | $\frac{3}{4}$ | $1\frac{5}{8}$ | |
| $1\frac{3}{4}$ | 18,600 | 93.6 | | | | | $1\frac{3}{8}$ | $1\frac{1}{4}$ | 5 | $2\frac{3}{4}$ | $3\frac{1}{2}$ | $\frac{1}{2}$ | $1\frac{7}{8}$ | |
| | | | | | | | | | | | | | | |

■ Based on the rod diameter only. Rating is subject to the conditions that the concrete and anchors used are of sufficient strength to hold the load.

| PROJECT INFORMATION | | APPROVAL STAMP | |
|---------------------|--|--------------------------------------------|--|
| Project: | | <input type="checkbox"/> Approved | |
| Address: | | <input type="checkbox"/> Approved as noted | |
| Contractor: | | <input type="checkbox"/> Not approved | |
| Engineer: | | Remarks: | |
| Submittal Date: | | | |
| Notes 1: | | | |
| Notes 2: | | | |