

Fig. 60

Steel Washer Plate

Size Range: 3/8" to 3 3/4"

Material: Carbon steel

Finish: Plain or Hot-Dip Galvanized

Service: A heavy duty washer plate used on top of channels or angles for supporting pipe with rods or U-bolts.

Maximum Temperature: Plain 750° F, Galvanized 450° F

Ordering: Specify rod size, figure number, name and finish.

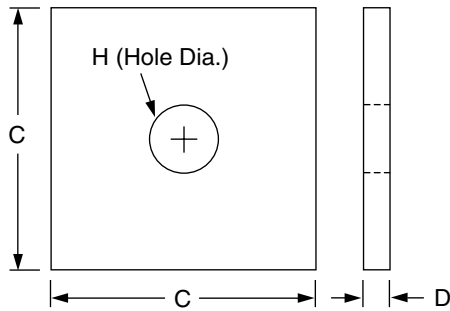
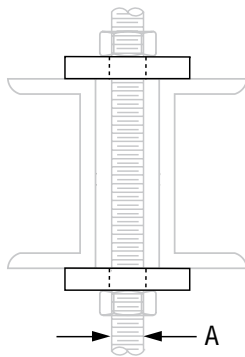
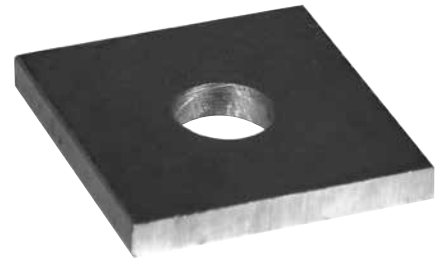


FIG. 60: WEIGHT (LBS) • DIMENSIONS (IN)

Rod Size A	Weight	Max Load		C x C x D Size of Stock	Hole Dia. H
		650° F	750° F		
3/8	0.6	730	572	3 x 3 x 1/4	1/2
1/2	0.6	1,350	1,057		5/8
5/8	0.9	2,160	1,692	3 x 3 x 3/8	3/4
3/4	1.6	3,230	2,530	4 x 4 x 3/8	7/8
7/8	2.2	4,480	3,508	4 x 4 x 1/2	1
1	2.1	5,900	4,620		1 1/4
1 1/4	3.3	9,500	7,440	5 x 5 x 1/2	1 1/2
1 1/2	4.8	13,800	10,807	5 x 5 x 3/4	1 3/4
1 3/4	4.7	18,600	14,566		2
2	4.5	24,600	19,265		2 1/4
2 1/4	6.6	32,300	25,295	6 x 6 x 3/4	2 1/2
2 1/2	6.4	39,800	31,169		2 3/4
2 3/4	6.2	49,400	38,687		3
3	5.9	60,100	47,066		3 1/4
3 1/4	5.6	71,900	56,307	7 x 7 x 3/4	3 1/2
3 1/2	8.1	84,700	66,331		3 3/4
3 3/4	7.8	98,500	77,139		4

PROJECT INFORMATION		APPROVAL STAMP	
Project:		<input type="checkbox"/> Approved	
Address:		<input type="checkbox"/> Approved as noted	
Contractor:		<input type="checkbox"/> Not approved	
Engineer:		Remarks:	
Submittal Date:			
Notes 1:			
Notes 2:			