

## Fig. 54

## Two Hole Welding Beam Lug

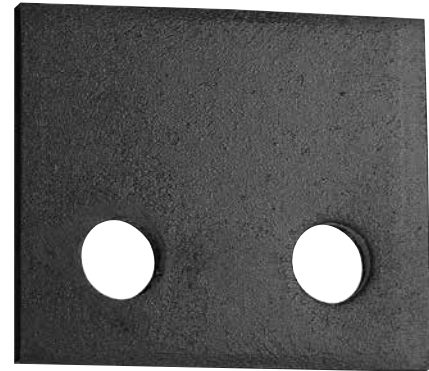
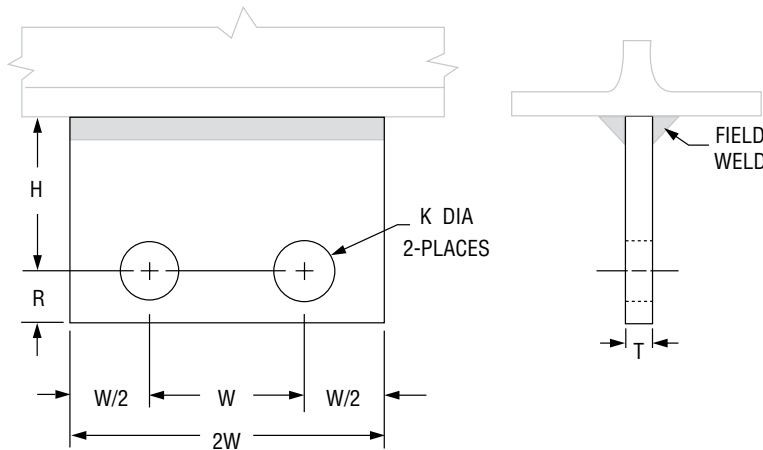
**Size Range:** 1/2" through 2 1/4"

**Material:** Carbon steel

**Finish:**  Plain or  Hot-Dip Galvanized

**Service:** For single rod suspension of Fig. 81-H, type B and C constant supports.

**Ordering:** Specify rod size, figure number, name, finish and "H" dimension.



**FIG. 54: LOAD (LBS) • WEIGHT (LBS) • DIMENSIONS (IN)**

Rod Size A *	Max Load	Weight "H" Dimension ▲				Rod Take Out - "H" Dimension Constant Support Frame Sizes					Pin or Bolt	K Hole	R	T	W	2W	W/2
		1 1/2	2	3	4	1-9	10-18	19-34	35-49	50-63							
1/2	1,350	1.4	1.7	2.2	-	1 1/2	1 1/2	2	3	4	5/8	1 1/16	1 1/4	3/8	2 1/2	5	1 1/4
5/8	2,160	1.4	1.6	2.2	-						3/4	1 3/16					
3/4	3,230	1.3	1.6	2.1	2.6	-	-	3	4	7/8	1 5/16	1 1/2	1/2	3	6	1 1/2	
1	5,900	-	2.6	3.5	4.3	-	-			1 1/8	1 1/4						
1 1/4	9,500	-	5.0	6.5	7.9	-	-	4	4	1 3/8	1 1/2	2	5/8	4	8	2	
1 1/2	13,800	-	-	10.7	12.8	-	-			1 5/8	1 3/4						
1 3/4	18,600	-	-	10.4	12.5	-	-	4	4	1 7/8	2	2 1/2	3/4	5	10	2 1/2	
2	24,600	-	-	-	16.0	-	-			2 1/4	2 3/8						
2 1/4	32,300	-	-	-	15.6	-	-	4	4	2 1/2	2 5/8	3	3/4	6	12	3	

Select "H" dimension applicable to constant support frame size.

▲ Weight varies with "H" dimension.

\* Note: Rod size "A" is the assembly rod diameter. Dimension not shown on drawing

PROJECT INFORMATION		APPROVAL STAMP	
Project:		<input type="checkbox"/> Approved	
Address:		<input type="checkbox"/> Approved as noted	
Contractor:		<input type="checkbox"/> Not approved	
Engineer:		Remarks:	
Submittal Date:			
Notes 1:			
Notes 2:			