

Fig. 595

Socket Clamp for Ductile Iron or Cast Iron Pipe

Size Range: 4" through 24"

Material: Two carbon steel half bands and four bolts and nuts.

Finish: Plain or Hot-Dip Galvanized with Zinc Plated Bolts & Nuts

Service: Clamps ductile or cast iron mechanical joint piping or mechanical joint or socket joint fittings together to prevent separation or distortion of pipe line under excessive water pressure.

Approvals: Complies with Federal Specification A-A-1192A (Type 8), ANSI/MSS SP-69 and MSS SP-58 (Type 8). Complies with the requirements of the National Fire Protection Association Standard NFPA-24 for Outside Protection.

Ordering: Specify pipe size, figure number, name and finish.

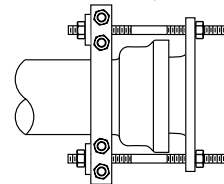
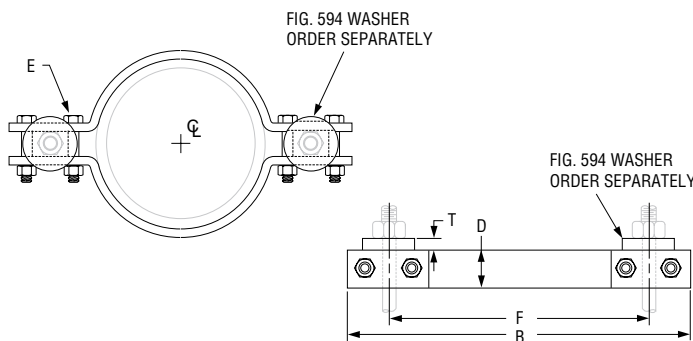


Fig. 594

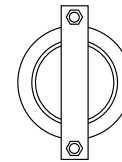
Socket Clamp Washer

Two cast iron or steel washers, Fig. 594, are used with each Fig. 595 socket clamp and these must be ordered separately.

Ordering: Specify washer size, figure number, name and finish.



Plug Strap for Bell End of Pipe



Pipe Anchor

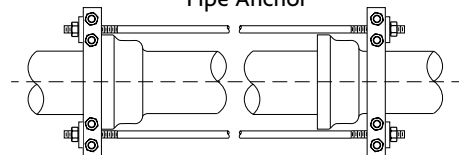


FIG. 595, FIG. 594: LOADS (LBS) • WEIGHT (LBS) • DIMENSIONS (IN)

D.I./C.I. Pipe Size	Max Test Pressure (PSI)	Force* On Clamp	Weight		Pipe O.D.	B	D Width	Bolt Dia. E	F	T	Fig. 594 Washer Rod Dia.
			Fig. 595 Clamp	Fig. 594 Washer							
4	250	4,550	12.8	1.1	5	14 ⁵ / ₈	2	5/8	9 ⁵ / ₈	5/8	3/4
6		9,340	14.6		7 ¹ / ₈	16 ⁷ / ₈					
8		16,080	23.6		9 ⁵ / ₁₆	19 ¹ / ₈					
10		24,180	29.3		11 ¹ / ₂	21 ³ / ₈					
12	120	34,230	40.3	1.7	13 ¹ / ₂	25 ¹ / ₈	2 ¹ / ₂	3/4	16 ⁵ / ₈	3/4	1
14		22,200	53.9		15 ³ / ₄	28 ¹ / ₄					
16		27,760	76.5		17 ⁷ / ₈	31 ³ / ₈					
18		23,900	94.3		20	35 ¹ / ₈					
20	75	27,500	109.8	4.3	22 ¹ / ₈	37 ³ / ₄	4 ¹ / ₂	7/8	19 ⁵ / ₈	1 ¹ / ₈	1 ¹ / ₄
22		22,200	53.9		15 ³ / ₄	28 ¹ / ₄					
24		26,200	148.6		5.8	26 ³ / ₈			44 ¹ / ₄		

*Refers to Hydrostatic Test

PROJECT INFORMATION		APPROVAL STAMP	
Project:		<input type="checkbox"/> Approved	
Address:		<input type="checkbox"/> Approved as noted	
Contractor:		<input type="checkbox"/> Not approved	
Engineer:		Remarks:	
Submittal Date:			
Notes 1:			
Notes 2:			