

Fig. 40

Riser Clamp – Standard

Size Range: 2" through 24"

Material: Carbon steel (CS), Alloy (A), or Stainless Steel (SS)

Finish: Plain or Hot-Dip Galvanized with Zinc Plated Fasteners

Maximum Temperature: Galvanized 450° F, 650° F (CS), 950° F (A) and 1,000° F (SS)

Service: Riser clamps are used for the support of vertical piping. Load is carried by shear lugs which are welded to the pipe. Shear lugs provided upon request. Local pipe wall stress evaluation available upon request.

Approvals: Complies with Federal Specification A-A-1192A (Type 42), ANSI/MSS SP-69 and MSS SP-58 (Type 42).

Ordering: Specify pipe size, material, figure number, name and finish.

Note: If different loads or dimensions are required, refer to Fig. 40 SD special design riser clamp.

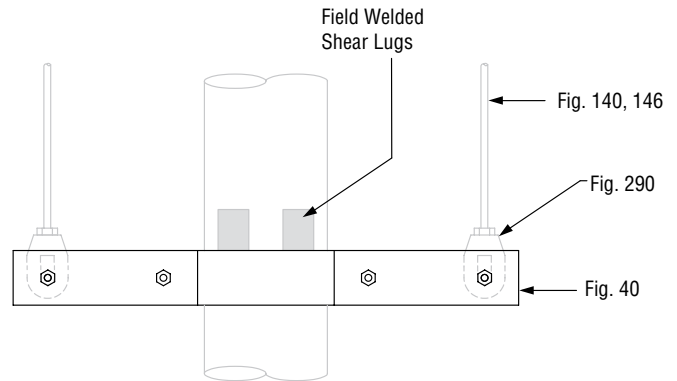
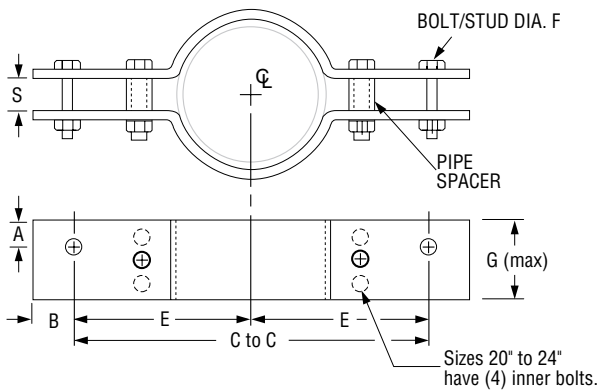


FIG. 40: LOADS (LBS) • WEIGHT (LBS) • DIMENSIONS (IN)

Pipe Size	Max Load		C-C	E	F (max)	G (max)	S	A (CS)	A (alloy) (SS)	B (max)	Maximum Weight Each		
	Rigid Assembly	Spring Assembly									CS	SS	Alloy
2	900	1,800	18	9	1/2	2 1/2	3/4	1 1/4	7/8	2	18	15	18
2 1/2			20	10							20	20	20
3	1,500	3,000	22	11	3/4	3	1 1/2	1 1/8	1 1/4	3	30	25	30
4											40	40	44
5	2,200	4,400	24	12	7/8	4	1	7/8	1 1/4	3	45	40	45
6											60	60	73
8	3,000	6,000	27	13 1/2	1 1/2	5	1 3/4	1 3/8	1 3/8	3	82	82	82
10			30	15							1 1/4	6	1 1/2
12	7,800	15,600	32	16	1 1/2	7	1 3/4	1 3/8	1 3/8	3	216	202	250
14			34	17							7	1 3/4	1 3/8
16	9,000	18,000	36	18	1 1/2	8	2	1 1/2	2	3	314	277	315
18			39	19 1/2							8	2	1 1/2
20	13,500	27,000	42	21	2	9	2 1/2	2 5/8	2 5/8	4 1/4	525	525	580
24			45	22 1/2							9	2 1/2	2 5/8

PROJECT INFORMATION		APPROVAL STAMP	
Project:		<input type="checkbox"/> Approved	
Address:		<input type="checkbox"/> Approved as noted	
Contractor:		<input type="checkbox"/> Not approved	
Engineer:		Remarks:	
Submittal Date:			
Notes 1:			
Notes 2:			