

Fig. 224

Alloy Steel Pipe Clamp

Size Range: 4" through 16"

Material: Chrome molybdenum steel except U-bolt which is stainless steel.

Service: Recommended for suspension of high temperature pipe requiring up to 4" of insulation.

Maximum Temperature: 1,050° F

Approvals: Complies with Federal Specification A-A-1192A (Type 2), WW-H-171-E (Type 2), and MSS SP-58 (Type 2).

Installation: Normally used with welded eye rod Fig. 278 or weldless eye nut Fig. 290.

Features:

- Designed for the support of loads at temperatures up to 1,050° F.
- Designed to satisfy most critical engineering specifications.
- Yoke has rugged cross sectional area, eliminating high stress conditions.
- When used on pipe with 4" of insulation the top bolt is outside of the insulation.

Ordering: Specify pipe size, figure number and name.

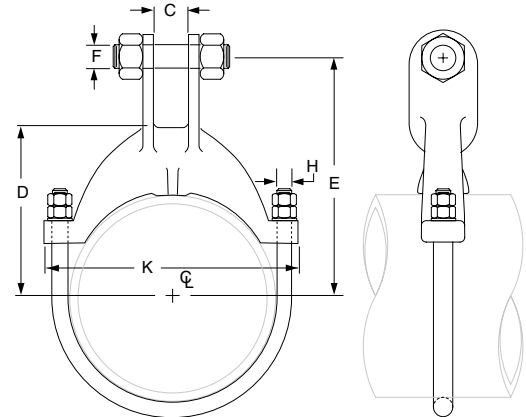
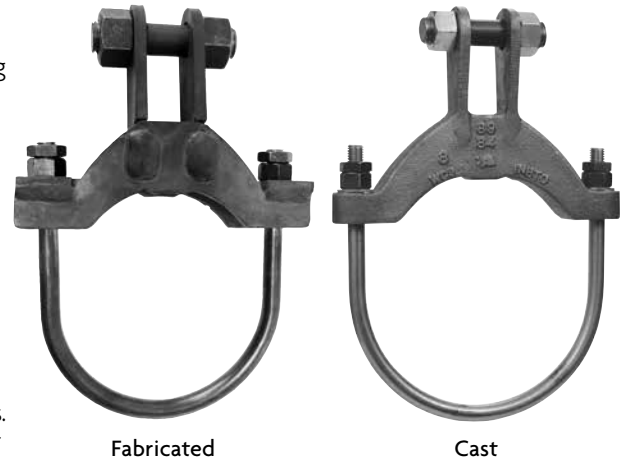


FIG. 224: LOADS (LBS) • WEIGHT (LBS) • DIMENSIONS (IN)

Pipe Size	Max Load ■				Weight	C	D	Rod Take Out E	F	H	K
	750° F	950° F	1,000° F	1,050° F							
4	3,780	3,300	2,770	1,890	4.0	1 ¹ / ₁₆	3 ⁷ / ₈	6 ³ / ₄	7 ⁷ / ₈	1 ¹ / ₂	6 ¹ / ₂
6	6,060	5,290	4,440	3,030	7.5	1 ⁷ / ₁₆	5 ⁷ / ₁₆	8 ⁵ / ₁₆	1	5 ⁵ / ₈	9 ¹ / ₈
8					9.0		6 ¹¹ / ₁₆	9 ⁹ / ₁₆			11 ¹ / ₈
10	9,060	7,910	6,640	4,420	15.8	1 ¹⁵ / ₁₆	8 ³ / ₈	10 ⁷ / ₈	1 ¹ / ₈	3 ³ / ₄	13 ⁵ / ₈
12	12,570	10,980	9,015	6,010	24.3		10 ¹ / ₈	12 ⁷ / ₈	1 ¹ / ₂	7 ⁷ / ₈	16 ¹ / ₈
14					26.3		11 ¹ / ₈	13 ⁷ / ₈			17 ³ / ₈
16					31.0	12 ¹ / ₄	15	19 ⁵ / ₈			

■ Based on the allowable stresses shown in the ASME Code for Pressure Piping. Over tightening of nuts may overstress U-bolts reducing the load rating. Installation tag attached to clamp gives proper nut tightening.

PROJECT INFORMATION		APPROVAL STAMP	
Project:		<input type="checkbox"/> Approved	
Address:		<input type="checkbox"/> Approved as noted	
Contractor:		<input type="checkbox"/> Not approved	
Engineer:		Remarks:	
Submittal Date:			
Notes 1:			
Notes 2:			