

Fig. 590

Adjustable Clevis for Ductile or Cast Iron Pipe

Size Range: 3" through 24" ductile or cast iron pipe

Material: Carbon steel

Finish: Plain or Hot-Dip Galvanized with Zinc Plated Bolts & Nuts

Service: Recommended for the suspension of **stationary** ductile iron or cast iron pipe.

Maximum Temperature: Plain 650° F, Galvanized 450° F

Approvals: Complies with Federal Specification A-A-1192A (Type 1) WW-H-171-E (Type 1), ANSI/MSS SP-69 and MSS SP-58 (Type 1).

Installation: Hanger rod nut above clevis must be tightened securely to assure proper hanger performance.

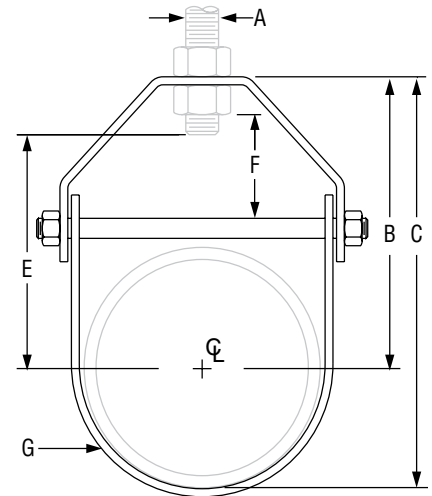
Adjustment: Vertical adjustment without removing pipe may be made from 1 ¹⁵/₁₆" through 3 ³/₁₆", varying with the size of the clevis. Tighten upper nut after adjustment.

Ordering: Specify pipe size, figure number, name and finish.

Note: Figure 590 sizes 12" and below typically feature a Figure 260 Top Component.



FIG. 590: LOADS (LBS) • WEIGHT (LBS) • DIMENSIONS (IN)										
D.I./C.I. Pipe Size	Max Load	Weight	D.I./C.I. Pipe O.D.	Rod Size A	B	C	E	F	G Width Lower	
3	1,350	1.10	3.96	1/2	5 1/16	7 1/16	4 3/16	1 13/16	1 1/4	
4	1,430	1.64	4.80	5/8	5 3/4	8 3/16	4 3/4	1 15/16		
6	1,940	4.26	6.90	3/4	7 1/8	10 9/16	5 15/16	2 1/4	1 1/2	
8	2,000	6.70	9.05		7/8	8 5/8	13 3/16		7 1/2	1 3/4
10	3,600	9.73	11.10	1	10 1/8	15 11/16	8 3/4	2 5/16	2	
12	3,800	13.64	13.20		1 1/8	12 1/16	18 11/16	10 11/16		2 7/8
14	4,200	16.04	15.30	1 1/4	13 1/4	20 7/8	11 5/16	2 9/16	2 1/2	
16	4,600	24.52	17.40		1 3/8	14 1/4	22 15/16	12 9/16		2 7/16
18	4,800	27.45	19.50	1 1/2	16 7/8	26 5/8	15 3/16	3 13/16	3	
20	4,800	46.24	21.60		1 7/8	18 1/4	29 1/16			16 3/8
24	4,800	57.10	25.80		2	20 5/16	33 1/4			18 3/8



PROJECT INFORMATION		APPROVAL STAMP	
Project:		<input type="checkbox"/> Approved	
Address:		<input type="checkbox"/> Approved as noted	
Contractor:		<input type="checkbox"/> Not approved	
Engineer:		Remarks:	
Submittal Date:			
Notes 1:			
Notes 2:			