

Fig. 104

Adjustable Swivel Ring, Split Ring Type

Size Range: 3/4" through 8"

Material: Malleable iron, carbon steel

Finish: Plain or Zinc Plated (Hot-Dip Galvanized optional)

Service: Recommended for suspension of non-insulated **stationary** pipe lines.

Maximum Temperature: 450° F

Approvals: Complies with Federal Specification A-A-1192A (Type 6) WW-H-171-E (Type 6), ANSI/MSS SP-69 and MSS SP-58 (Type 16).

Features:

- Labor-saving features in installation completely outweigh slight additional cost.
- Hanger may be installed prior to suspension of pipe.
- Off-center hinge provides seating for pipe during installation.
- Wedge-type locking pin is inseparably cast into hinged section, sizes 2 1/2" and larger.
- Adjustable swivel ring is self-locking; prevents loosening due to vibration; maintains proper pitch of pipe.
- Wire retaining ring prevents separation of swivel shank from pipe ring before installation.

Ordering: Specify pipe size, figure number, name and finish.

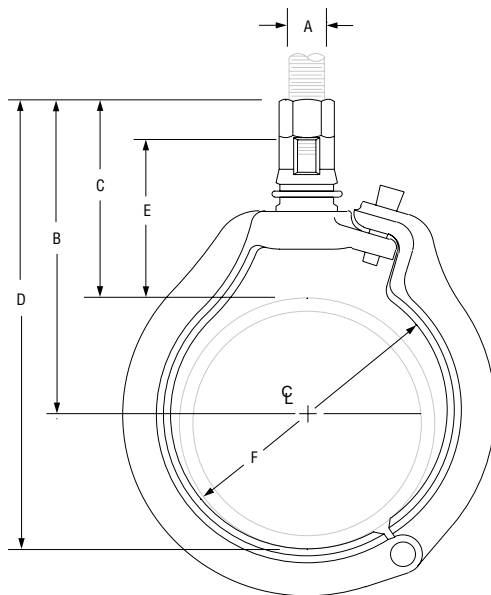


FIG. 104: LOADS (LBS) • WEIGHT (LBS) • DIMENSIONS (IN)

| Pipe Size | Max Load | Weight | Rod Size A | B | C | D | E | Inside Dia. of Ring – F |
|-----------|----------|--------|------------|---------|--------|----------|---------|-------------------------|
| 3/4 | 300 | 0.31 | 3/8 | 2 7/8 | 2 3/8 | 3 7/16 | 1 5/16 | 1 3/16 |
| 1 | | 0.32 | | | 2 1/4 | 3 9/16 | 1 3/4 | 1 7/16 |
| 1 1/4 | | 0.34 | | 3 | 2 3/16 | 3 7/8 | 1 11/16 | 1 13/16 |
| 1 1/2 | | 0.41 | | | | 3 3/8 | | 4 1/8 |
| 2 | | 0.48 | | 3 1/2 | 2 5/16 | 4 11/16 | 1 13/16 | 2 1/2 |
| 2 1/2 | 500 | 0.58 | 1/2 | 3 5/16 | 2 1/2 | 5 3/8 | 1 7/8 | 3 |
| 3 | | 1.00 | | 4 3/8 | 2 5/8 | 6 1/8 | 2 | 3 3/4 |
| 4 | | 1.70 | | 5 13/16 | 3 9/16 | 8 1/16 | 2 7/8 | 4 13/16 |
| 6 | 1,300 | 3.80 | 3/4 | 7 5/8 | 4 5/16 | 10 15/16 | 3 1/2 | 7 1/16 |
| 8 | 1,800 | 6.10 | 7/8 | 9 1/8 | 4 7/8 | 13 1/2 | 3 7/8 | 9 1/16 |

| PROJECT INFORMATION | | APPROVAL STAMP | |
|---------------------|--|--|--|
| Project: | | <input type="checkbox"/> Approved | |
| Address: | | <input type="checkbox"/> Approved as noted | |
| Contractor: | | <input type="checkbox"/> Not approved | |
| Engineer: | | Remarks: | |
| Submittal Date: | | | |
| Notes 1: | | | |
| Notes 2: | | | |