

Fig. 261SS

Extension Pipe or Riser Clamp

Size Range: 1/2" through 12"

Material: 304 stainless steel

Service: For support of stationary steel pipe risers or conduit.

Maximum Temperature: 650° F

Approvals: Complies with Federal Specification A-A-1192A (Type 8) WW-H-171-E (Type 8), ANSI/MSS SP-69 and MSS SP-58 (Type 8).

Installation: Clamp is fitted and bolted below a coupling, hub or welded lugs on steel pipe (2 lugs up to 3" pipe, 4 lugs up to 12" pipe). Bolt torques should be per industry standards. Clamp is designed for standard steel pipe O.D. and this must be considered in sizing the riser for other types of piping.

Ordering: Specify pipe size, figure number, name and finish.

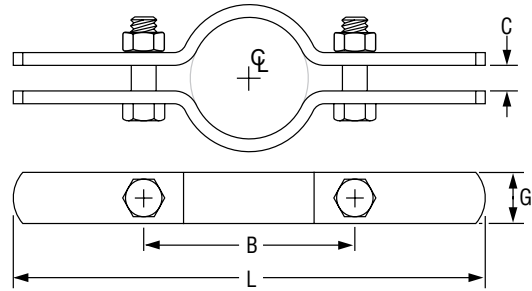


FIG. 261SS: LOADS (LBS) • WEIGHT (LBS) • DIMENSIONS (IN) • TORQUE (FT-LBS)

Pipe Size	Max Load		Lugs	Weight	L	G Width	B	C	Bolt Diameter	Torque Values	
	450° F	650° F									
1/2 - 3/4	185	165	2	1.1	8 7/8	1	2 7/8	3/8	3/8	21	
1	210	190		1.1			10				3 1/8
1 1/4				1.6							3 1/2
1 1/2	255	230		1.6	10 1/4		3 7/8				
2	340	305		1.7			4 1/4				
2 1/2	425	385		1.9			4 3/4				
3	510	460	1.9	11 3/8	1 1/2	12	1/2	7/16	32		
4	635	570	2.4	12 7/8						7	
5	1,275	1,150	3.6	13 3/4						8	
6	1,360	1,225	4.0	14 3/4	2	15 3/4	5/8	5/8	100		
8	1,380	1,240	7.6	18 1/2						9	
10	1,800	16200	11.1	20 1/4						12	
12			16.5	22 3/4							

PROJECT INFORMATION		APPROVAL STAMP	
Project:		<input type="checkbox"/> Approved	
Address:		<input type="checkbox"/> Approved as noted	
Contractor:		<input type="checkbox"/> Not approved	
Engineer:		Remarks:	
Submittal Date:			
Notes 1:			
Notes 2:			