

Class 150 (Standard)

FIGURES 3110, 3111 and 3112

Plugs



For Listings/Approval Details and Limitations, visit our website at www.anvilintl.com or contact an Anvil® Sales Representative.

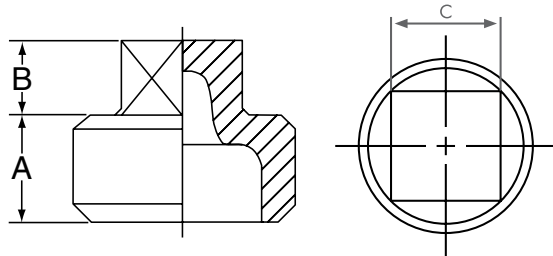


Fig. 3110 (Solid Square) or
Fig. 3111 (Cored Square)



Fig. 3112 (Cored Bar)

PLUGS					
Figure Numbers	Nominal Size	Dimensions			Approx. Wt. Each
		A	B	C	
	In. (mm)	In. (mm)	In. (mm)	In. (mm)	Lbs. (kg)
3110 - Solid	1/4	0.44	0.28	0.38	0.04
	8	11.18	7.11	9.65	0.02
3110 - Solid	3/8	0.48	0.31	0.44	0.06
	10	12.19	7.81	11.18	0.03
3111 - Cored	1/2	0.56	0.38	0.56	0.08
	15	14.22	9.65	14.22	0.04
3111 - Cored	3/4	0.63	0.44	0.63	0.13
	20	16.00	11.18	16.00	0.06
3111 - Cored	1	0.75	0.50	0.81	0.20
	25	19.05	12.70	20.57	0.09
3111 - Cored	1 1/4	0.80	0.56	0.94	0.32
	32	20.32	14.22	23.88	0.15
3111 - Cored	1 1/2	0.83	0.62	1.13	0.43
	40	21.08	15.75	28.70	0.20
3111 - Cored	2	0.88	0.68	1.31	0.67
	50	22.35	17.27	33.27	0.30
3111 - Cored	2 1/2	1.07	0.74	1.50	1.11
	65	27.18	18.80	38.10	0.50
3111 - Cored	3	1.13	0.80	1.69	1.53
	80	28.70	20.32	42.93	0.69
3112 - Bar	4	1.22	1.00	—	2.71
	100	30.99	25.40	—	1.23
3112 - Bar	6	1.40	1.25	—	4.00
	150	35.56	31.75	—	1.81

MATERIAL SPECIFICATIONS

Dimensions: Fittings: ASME B16.3
Unions: ASME B16.39
Bushings/Plugs: ASME B16.14

Material: ASTM A-197

Finish: Black or Hot Dip Galvanized per ASTM A153 Class A

Threads*: NPT per ASME B1.20.1

Pressure Ratings: Fittings: ASME B16.3
Unions: ASME B16.39
Bushings/Plugs: ASME B16.14

Pressure Testing: All malleable iron fittings are tested for through wall porosity using an air under water process.

Agency Approvals: All malleable iron fittings and unions are UL/ULC Listed and FM Approved.

* British Standard threading per BS 21 available upon request.

Note: Figures 3110 and 3111 are square head plugs; solid or cored. Figure 3112 are cored bar plugs.

PROJECT INFORMATION

APPROVAL STAMP

Project:	<input type="checkbox"/> Approved
Address:	<input type="checkbox"/> Approved as noted
Contractor:	<input type="checkbox"/> Not approved
Engineer:	Remarks:
Submittal Date:	
Notes 1:	
Notes 2:	