

Class 150 (Standard)

FIG. 3190

Floor Flange

(Ductile Iron)

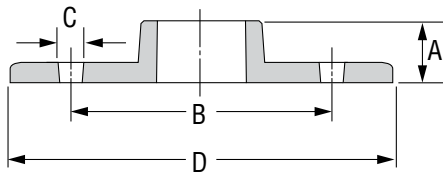


FIGURE 3190 - FLOOR FLANGE

Nominal Size	Laying Length	Diameter Flange	Diameter of Bolt Circle	Diameter of Bolt Holes	Approx. Wt. Each
	A	D	B	C	
<i>In. (mm)</i>	<i>In. (mm)</i>	<i>In. (mm)</i>	<i>In. (mm)</i>	<i>In. (mm)</i>	<i>Lbs. (kg)</i>
1/2 15	0.55 14	3.50 88.90	2.50 63.50	0.28 7.11	0.35 0.16
3/4 20	0.63 16	3.37 85.60	2.36 59.94	0.28 7.11	0.49 0.22
1 25	0.67 17	3.78 96.01	2.80 71.12	0.28 7.11	0.63 0.29
1 1/4 32	0.75 19	4.19 106.43	3.17 80.52	0.28 7.11	0.87 0.39
1 1/2 40	0.87 22	4.59 116.59	3.50 88.90	0.31 7.87	1.10 0.50
2 50	0.98 25	5.18 131.57	4.01 101.85	0.31 7.87	1.57 0.71

MATERIAL SPECIFICATIONS

Material: ASTM A536 Grade 65-45-12
 Finish: Black or Hot Dip Galvanized per ASTM A153 Class A
 Threads*: NPT per ASME B1.20.1

* Fitting for structural use only.

PROJECT INFORMATION

APPROVAL STAMP

Project:	<input type="checkbox"/> Approved
Address:	<input type="checkbox"/> Approved as noted
Contractor:	<input type="checkbox"/> Not approved
Engineer:	Remarks:
Submittal Date:	
Notes 1:	
Notes 2:	