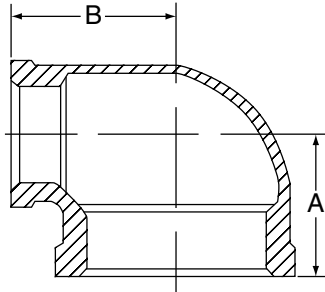


Class 300 (XS/XH)

FIG. 3161R

Reducing 90° Elbow



For Listings/Approval Details and Limitations, visit our website at www.anvilintl.com or contact an Anvil® Sales Representative.

FIGURE 3161R - REDUCING 90° ELBOW

Nominal Size	Dimensions		Approx. Wt. Each
	A	B	
<i>In. (mm)</i>	<i>In. (mm)</i>	<i>In. (mm)</i>	<i>Lbs. (kg)</i>
1/2 x 3/8	1.19	1.19	0.41
15 x 10	30.23	30.23	0.19
1 x 3/4	1.50	1.56	1.00
25 x 20	38.10	39.62	0.45

MATERIAL SPECIFICATIONS

Dimensions: Fittings: ASME B16.3
 Unions: ASME B16.39
 Bushings/Plugs: ASME B16.14

Material: ASTM A-197

Finish: Black or Hot Dip Galvanized per ASTM A153 Class A

Threads: NPT per ASME B1.20.1

Pressure Ratings: Fittings: ASME B16.3
 Unions: ASME B16.39
 Bushings/Plugs: ASME B16.14

Pressure Testing: All malleable iron fittings are tested for through wall porosity using an air under water process.

Agency Approvals: All malleable iron fittings and unions are UL/ULC Listed and FM Approved.

PROJECT INFORMATION

APPROVAL STAMP

Project:	<input type="checkbox"/> Approved
Address:	<input type="checkbox"/> Approved as noted
Contractor:	<input type="checkbox"/> Not approved
Engineer:	Remarks:
Submittal Date:	
Notes 1:	
Notes 2:	