

## Fig. 207

## Threaded Steel Side Beam Bracket

**Size Range:**  $\frac{3}{8}$ " and  $\frac{1}{2}$ "

**Material:** Carbon steel

**Finish:**  Plain or  Zinc Plated

**Service:** Recommended for attachment to steel or wooden beams, etc.

**Approvals:** Complies with Federal Specification A-A-1192A (Type 34), WW-H-171-E (Type 35), ANSI/MSS SP-69 and MSS SP-58 (Type 34). UL Listed (Sizes  $\frac{3}{8}$ " and  $\frac{1}{2}$ ").

FM Approved (Size  $\frac{3}{8}$ " for use on steel beam only)

**Features:** Threaded mounting bracket provides an economical, practical, and adjustable means of securing hangers to beams.

**Ordering:** Specify rod size, figure number, name and finish.

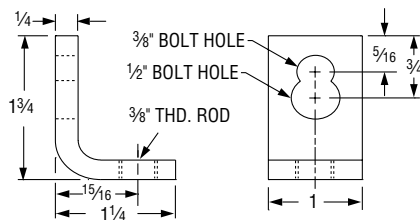


Fig. 207  $\frac{3}{8}$ "

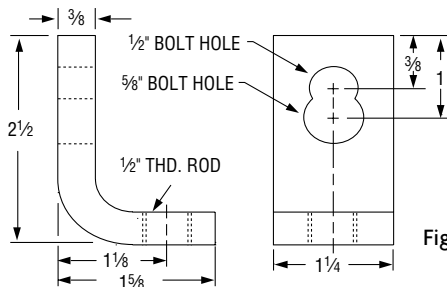


Fig. 207  $\frac{1}{2}$ "

**FIG. 207:  
LOAD (LBS) • WEIGHT (LBS) • DIMENSIONS (IN)**

Rod Size A	Bolt Size	Max Load		Weight
		With Lag Screw	With Bolt to Steel	
$\frac{3}{8}$	$\frac{3}{8}$	400	620	0.17
	$\frac{1}{2}$	560		
$\frac{1}{2}$	$\frac{1}{2}$	650	1,150	0.42
	$\frac{5}{8}$	850		

PROJECT INFORMATION		APPROVAL STAMP	
Project:		<input type="checkbox"/> Approved	
Address:		<input type="checkbox"/> Approved as noted	
Contractor:		<input type="checkbox"/> Not approved	
Engineer:		Remarks:	
Submittal Date:			
Notes 1:			
Notes 2:			