

Fig. 100

Extended Pipe Clamp

Size Range: 1/2" through 8"

Material: Carbon steel

Finish: Plain or Hot-Dip Galvanized with Zinc Plated Fasteners

Service: For attachment to structure without use of rods.

Maximum Temperature: Plain 650° F, Galvanized 450° F

Ordering: Specify pipe size, figure number, name and finish.

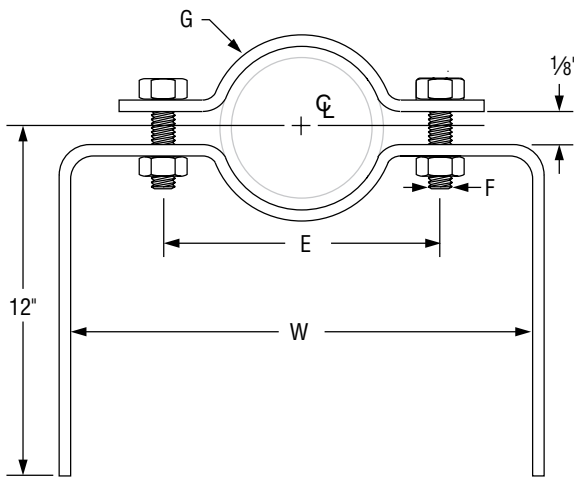
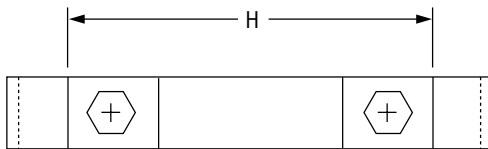


FIG. 100: WEIGHT (LBS) • DIMENSIONS (IN)						
Pipe Size	W	E	F	G Width	H	Weight
1/2	5 5/8	2 7/8	3/8	1	4 1/4	1.85
3/4	5 7/8	3 1/8			4 1/2	2.20
1	6 3/8	3 5/8			5	2.25
1 1/4	6 7/8	4 1/8			5 1/2	2.34
1 1/2	7 1/8	4 3/8	1/2	1 1/4	5 3/4	2.39
2	8 3/8	5 1/8			6 7/8	3.25
2 1/2	8 7/8	5 5/8			7 7/8	3.40
3	10	6 3/4			8 1/4	3.58
4	10 5/8	7 7/8	5/8	1 1/2	9 1/8	4.74
5	12 3/8	8 5/8			10 7/8	5.09
6	13 1/2	9 3/4			12	8.23
8	15 1/2	11 3/4			14	9.25

PROJECT INFORMATION		APPROVAL STAMP	
Project:		<input type="checkbox"/> Approved	
Address:		<input type="checkbox"/> Approved as noted	
Contractor:		<input type="checkbox"/> Not approved	
Engineer:		Remarks:	
Submittal Date:			
Notes 1:			
Notes 2:			