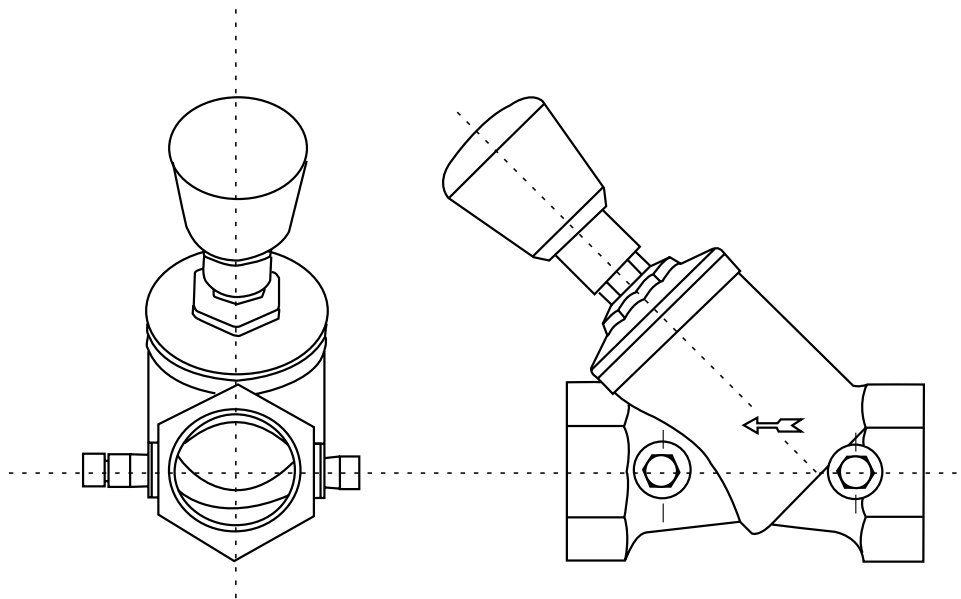




## INSTALLATION AND OPERATING INSTRUCTIONS Circuit Balancing Valves (NPT Threaded), Four Turn GBV-T

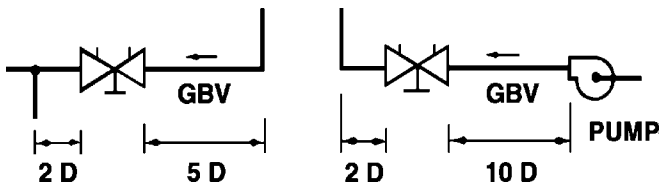


CALIFORNIA: Fullerton 92831, 1600 E. Orangethorpe, Phone: (714) 773-1166, Fax: (714) 879-2319  
ILLINOIS: University Park 60466, 750 Central Ave., Phone: (708) 534-1414, Fax: (708) 534-5334  
GEORGIA: Norcross 30071, 6344 Cash Court, Phone: (770) 662-8177, Fax: (770) 662-0284  
PENNSYLVANIA: Bristol 19007, 2530 Pearl Buck Road, Phone: (215) 672-3444, Fax: (215) 672-4406  
TEXAS: Grand Prairie 75050, 1313 Avenue R, Phone: (972) 343-9206, Fax: (972) 641-8946

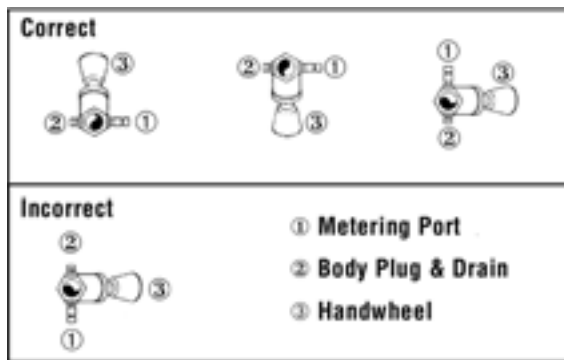
[www.anvilintl.com](http://www.anvilintl.com)

## INSTALLATION

- 1.) To ensure accuracy of measurement this GBV-T should be located at least five pipe diameters downstream from any fitting and at least 10 pipe diameters downstream from a pump. Two pipe diameters downstream from the GBV-T should be free of any fittings (as illustrated.)



- 2.) GBV-T Valves must be installed with flow in the direction of the arrow on the valve body. Easy access to the probe metering ports (P.M.P's), drain ports and handwheel must be provided.
- 3.) GBV-T valves can be installed in horizontal or vertical piping. The metering ports should never be installed below the pipe (pointing down), as this will allow system sediment to accumulate in the ports. (Illustrated below for horizontal and vertical piping.)

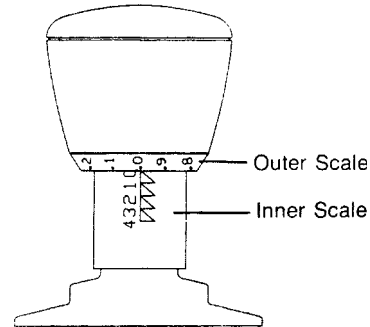


- 4.) Metering ports and body/drain plugs may be interchanged for improved accessibility.
- 5.) Drain valves are available as an accessory. When required, two 1/4" NPT connections, with plugs, are provided for drain valve installation.
- 6.) The valve operates from closed to fully open by a counterclockwise rotation of the orange handwheel using four 360° turns.

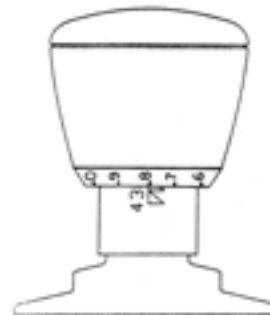
The position of the valve is indicated by two scales.

**Inner Scale** – This scale is printed on a black sleeve which moves linearly within the orange handwheel. This sleeve has an arrowed scale marked 0 - 4, (0) denoting closed and (4) being fully opened.

**Outer Scale** – This scale is a micrometer type scale 0 - 9 marked at the tapered base of the orange handwheel. Each gives 1/10th indications for each 360° turn of opening against the indicator line of the Inner Scale.



**Figure 1** – With all arrows visible, the Inner Scale set at 0 on the indicator line aligned with the 0 on the Outer Scale; the valve is closed.



**Figure 2** – Shows a valve setting of 2.8 indicating that the valve is partially open.



**Figure 3** – With no arrows visible, the Inner Scale set at 4 and the indicator line aligned with Outer Scale 0; the valve setting is 4.0 and the valve is fully open.

- 7.) Connect meter quick-disconnect hoses to metering ports as follows:
- Remove protective cap from metering ports.
  - Insert and lock the meter probe into the metering ports. The hose with red the red fitting, upstream; the hose with the blue fitting, downstream.

**CAUTION:** The probe should not be left inserted into the fitting for prolonged periods of time, overnight, etc., as leakage of the P.M.P. may occur when the probe is removed.

The locking nut on the probe is designed to hold it in the P.M.P. when taking readings in systems having a high working pressure. As sealing is accomplished internally on the probe stem, it is only necessary to tighten the locking nut finger-tight. Over-tightening may cause damage to the P.M.P. or locking nut threads.

- 8.) Before taking a flow measurement reading, set the valve to its fully open (4.0) or at a pre-set position. Read the pressure drop across the valve with a pressure differential meter. Determine GPM flow by use of valve  $C_v$  curve on page 4.

## MEMORY SETTING

- 9.) After valve has been adjusted and without moving the handwheel, insert a standard flat-blade screwdriver into the slot provided in the upper part of the handwheel. (Figure 4) Gently pry the cap off. Insert a  $3/32$ " allen wrench into the metal set screw, located approximately  $1/2$ " off center, next to the valve stem. Turn the set screw in a clockwise direction until it stops. It is not necessary to tighten. The memory has now been set. Align cap onto the handwheel and snap into position. Valve may now be closed tightly and re-opened to the memory set position.

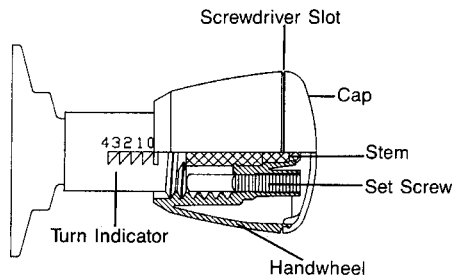


Figure 4

## REPOSITIONING HANDWHEEL

- 10.) The handwheel can be removed and repositioned in any of six (6) positions around the stem.
- a) Close valve fully.
  - b) Remove handwheel cap per Item 9.
  - c) Remove handwheel and turn indicator sleeve by grasping the handwheel and pulling away from the valve body along the stem.
  - d) Select a new position for easy reading, and with the sleeve and handwheel held together in the closed position (0.0), push them back over the bonnet hex and valve stem until they snap in place.
  - e) Replace handwheel cap per Item 9.
  - f) Open valve.
- 11.) If handwheel is removed for any reason, it is important to first close the valve and then replace the handwheel per 10 d) and e) above.

