

**Fig: 66**

**Welded Beam Attachment**

**Size Range:** 3/8" through 3 1/2"

**Material:** Carbon steel

**Finish:** Plain or Galvanized

**Service:** Recommended for attachment to bottom of beams, especially where loads are considerable and rod sizes are large.

**Maximum Temperature:** Plain 750° F, Galvanized 450° F

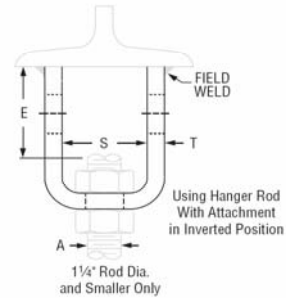
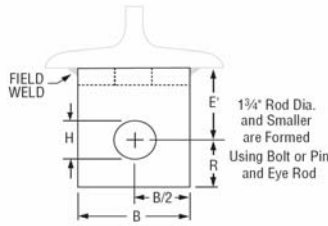
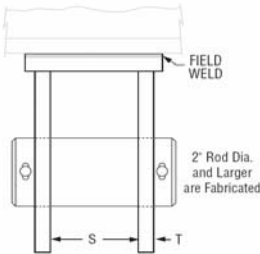
**Approvals:** Complies with Federal Specification A-A-1192A (Type 22) WW-H-171-E (Type 22) and MSS-SP-69 (Type 22).

**Installation:** If flexibility at the beam is desired, use with bolt and eye rod Fig. 278, page PH-82, or with weldless eye nut Fig. 290, page PH-89. If vertical adjustment is desired, use with threaded rod and nut and weld the attachment in an inverted position to the beam.

**Features:**

- Will accommodate very heavy loads and rod sizes through 3 1/2".
- Can be installed so as to provide for either flexibility or for vertical adjustment.
- Versatility affords economical stocking and erection.
- Beam size need not be considered.

**Ordering:** Specify rod size, figure number, name and finish. Specify "with bolt and nut" if required for 1" rod size and smaller. Specify "with pin and cotter pins" if required for 1 1/4" rod size and larger.



**Fig: 66: Load (lbs) • Weight (lbs) • Dimensions (in)**

Rod Size A	Pin or Bolt Size	Max Load		Weight		Rod Take Out		B	H	R	S	T	
		650° F	750° F	Without Bolt and Nut	With Bolt and Nut	E	E'						
3/8	1/2 x 2 1/2	730	572	0.96	1.2	1 7/8	2	2	9/16	7/8	1 1/4	1/4	
1/2	5/8 x 2 1/2	1,350	1,057		1.3	1 3/4							
5/8	3/4 x 2 3/4	2,160	1,692		1.6								
3/4	7/8 x 4	3,230	2,530	1.9	2.8	2 5/8	3	2 1/2	1 5/16	1 1/8	1 7/8	3/8	
7/8	1 x 4	4,480	3,508	2.5	3.9				1 1/8	1 1/4	2		
1	1 1/8 x 5	5,900	4,620	4.3	6.3				2 3/4	1 1/2	2 1/2		1/2
1 1/4	1 3/8 x 5 3/8	9,500	7,440	8.1	10.2	2 7/8	5	4	1 1/2	2	2 1/2	5/8	
1 1/2	1 5/8 x 6	13,800	10,807	15.6	19.0	-			4	1 3/4	2 1/2		3
1 3/4	1 7/8 x 6 7/8	18,600	14,566	18.7	24.2	-			5	2	2 3/4		3 3/4
2	2 1/4 x 6 7/8	24,600	19,265	22.8	30.6	-	6	6	2 3/8	3 1/4	3 1/2	1/2	
2 1/4	2 1/2 x 7 3/8	32,300	25,295	26.4	36.8	-			6	2 5/8			3 1/2
2 1/2	2 3/4 x 7 5/8	39,800	31,169	26.7	39.7	-			6	2 7/8	3 3/4		5/8
2 3/4	3 x 7	49,400	38,687	26.8	40.8	-	5 3/4	7	3 1/8	4	3 3/4	5/8	
3	3 1/4 x 7	60,100	47,066	32.6	46.7	-	6 1/4		3 3/8				
3 1/4	3 1/2 x 7 3/4	71,900	56,307	45.1	62.1	-	7		3 5/8	4 1/2			4 1/4
3 1/2	3 3/4 x 7 3/4	84,700	66,331	53.4	72.4	-	7 1/2	8	3 7/8	4 1/2	4 1/4	3/4	



**International Seismic Application Technology**  
 14848 East Northam Street, La Mirada, CA 90638  
 877-999-4728(Toll Free) 714-522-0845(Fax)  
 www.isatsb.com

*W V Joughn*

Model Law Structural Engineer  
 NCEES No.20675

Rev. 0  
 11/1/06

Page  
**H5.41**