

**Fig. 40**

**Riser Clamp – Standard**

**Size Range:** 2" through 24"

**Material:** Carbon steel (CS), Alloy (A), or Stainless Steel (SS)

**Finish:** Plain or Galvanized

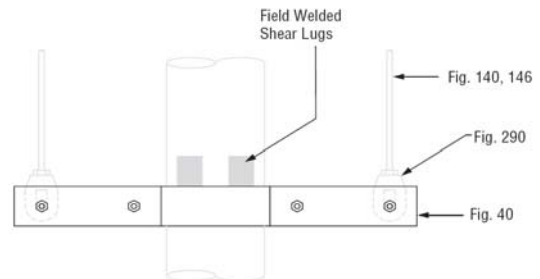
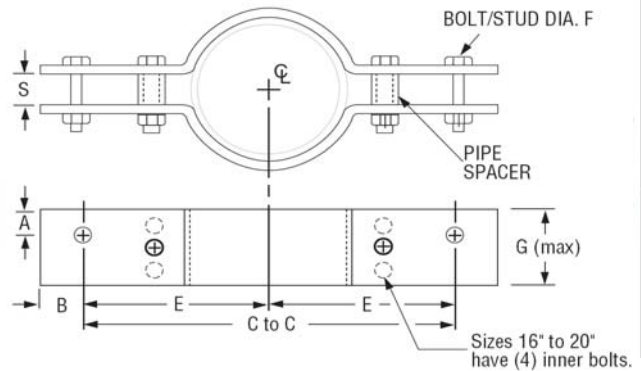
**Maximum Temperature:** Galvanized 450° F, 650° F (CS), 950° F (A) and 1,000° F (SS)

**Service:** Riser clamps are used for the support of vertical piping. Load is carried by shear lugs which are welded to the pipe. Shear lugs provided upon request. Local pipe wall stress evaluation available upon request.

**Approvals:** Complies with Federal Specification A-A-1192A (Type 42) and MSS-SP-69 (Type 42).

**Ordering:** Specify pipe size, material, figure number, name and finish.

**Note:** If greater loads are required, refer to Fig. 40-SD special design riser clamp.



**Fig. 40: Loads (lbs) • Weight (lbs) • Dimensions (in)**

Pipe Size	Max Load		C-C	E	F (max)	G (max)	S	A (CS)	A (alloy) (SS)	B (max)	Maximum Weight Each		
	Rigid Assembly	Spring Assembly									CS	SS	Alloy
2	900	1,800	18	9	1/2	2 1/2	3/4	1 1/4	7/8	2	18	15	18
2 1/2			20	10	5/8	3	1	1 1/2			20	20	20
3	1,500	3,000	22	11	3/4	4	1 1/4		2		1 1/8	30	25
4								40				40	44
5								45				40	45
6	3,000	6,000	24	12	7/8	5	1 1/2	7/8	1 1/4		60	60	73
8			27	13 1/2						82	82	82	
10	5,500	11,000	30	15	1 1/4	6	2 1/4	1 1/4	1 5/8	3	157	157	157
12	7,800	15,600	32	16	1 1/2	7	2 1/2	1 3/8	1 7/8		216	202	250
14			34	17							1 3/8	2	228
16	9,000	18,000	36	18				8	1 1/2				2
18			39	19 1/2	9	338	338	377					
20			42	21	10	525	525	580					
24	13,500	27,000	45	22 1/2	2	11	3 1/2	2 5/8	2 5/8	4 1/4	621	565	681



**International Seismic Application Technology**  
 14848 East Northam Street, La Mirada, CA 90638  
 877-999-4728(Toll Free) 714-522-0845(Fax)  
 www.isatsb.com

*W V Jaeger*

Model Law Structural Engineer  
 NCEES No.20675

Rev. 0  
 11/1/06

Page  
**H5.22**