

**Fig. 177**

**Adjustable Pipe Roll Support**

**Size Range:** 1" through 30"

**Material:** Cast iron roll and sockets; steel roll rod, continuous thread rods and hex nuts

**Finish:** Plain

**Service:** For support of pipe where horizontal movement due to expansion and contraction will occur and where vertical adjustment up to 6" may be necessary.

**Maximum Temperature:** 450° F at roller.

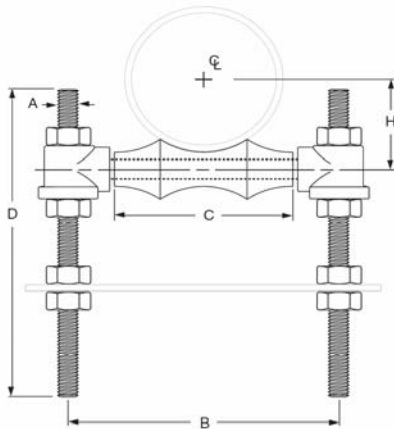
**Approvals:** Complies with Federal Specification A-A-1192A (Type 41) WW-H-171-E (Type 42) and MSS-SP-69 (Type 41).

**Installation:** Normally used directly above steel beams, brackets, angles, etc.

**How to size:**

- (1) If roll is to support bare pipe, select the size directly from nominal pipe size (see below).
- (2) If used with pipe covering protection saddle, see page PH-108 for size of pipe roll.
- (3) If roll is to support covered pipe, the O.D. of the covering should not be greater than the O.D. of the pipe for which the roll was designed.

**Ordering:** Specify size of roll, figure number and name. Be certain to order oversized rolls when insulation and protection saddles makes this necessary.



**Fig. 177: Weight (lbs) • Dimensions (in)**

Pipe Size	Weight	A	B	C	D	H
1	1.1	3/8	3	1 1/2	12	1 1/16
1 1/4	1.2		3 3/8	1 7/8		1 1/4
1 1/2	1.2		3 5/8	2 1/8		1 3/8
2	1.3		4 1/8	2 5/8		1 5/8
2 1/2	2.3	1/2	4 7/8	3 1/8		1 15/16
3	2.4		5 1/2	3 3/4		2 1/4
3 1/2	2.7	5/8	6 1/8	4 1/4		2 9/16
4	3.8		6 3/4	4 3/4		2 13/16
5	4.7		8 1/16	5 13/16	3 7/16	
6	7.6	3/4	9 9/16	6 7/8	4	
8	11.0		11 15/16	8 7/8	5 1/8	
10	13.7	7/8	14 1/16	11	6 3/8	
12	19.4		15 13/16	12 1/2	7 7/16	
14	31.2	1	17 3/4	14 1/4	8 3/8	
16	42.5		19 3/4	16 1/4	9 7/16	
18	46.6		21 7/8	18 1/4	10 1/2	
20	66.2	1 1/4	24 1/4	20 1/4	11 5/8	
24	102.5	1 1/2	28 5/8	24 1/4	14	
30	186.8		35 1/2	30 1/4	17 7/16	



**International Seismic Application Technology**  
 14848 East Northam Street, La Mirada, CA 90638  
 877-999-4728(Toll Free) 714-522-0845(Fax)  
 www.isatsb.com

*W V Jaeger*

Model Law Structural Engineer  
 NCEES No.20675

Rev. 0  
 11/1/06

Page  
**H5.15**