

**Fig. 171: Pipe Roll**

**Single Pipe Roll**

**Size Range:** 1" through 30"

**Material:** Cast iron roll and sockets, steel roll rod

**Finish:** Plain or Galvanized

**Service:** For suspension of pipe from two rods where longitudinal expansion and contraction may occur.

**Approvals:** Complies with Federal Specification A-A-1192A (Type 41) WW-H-171-E (Type 42) and MSS-SP-69 (Type 41).

**Adjustment:** Adjustable socket permits vertical adjustment at the roll.

**Maximum Temperature:** 450° F at roller

**How to size:**

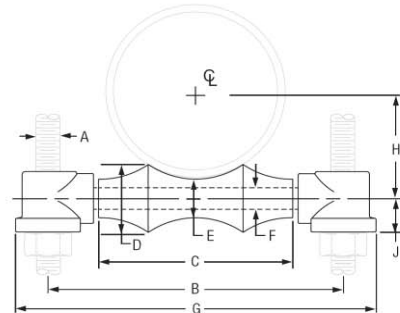
- (1) If the roll is to support non-insulated pipe, select the size directly from nominal pipe size (column 1) in table below.
- (2) If used with pipe covering protection saddle, see page PH-108 for size of pipe roll.

**Features:**

- Provides for vertical adjustment; nut at bottom of hanger rod fits into the socket preventing loosening or turning due to vibration.
- Pipe roll is designed for two point surface contact with pipe or saddle.

**Ordering:**

- Specify pipe roll size.
- Order should include figure number, name and finish in all cases. Hanger rods and nuts to be ordered separately.
- Be certain to order oversized rolls when insulation and protection saddles makes this necessary.



**Fig. 171: Loads (lbs) • Weight (lbs) • Dimensions (in)**

Pipe Size	Max O.D. Covering	Rod Size A	Max Load	Weight	G	B	C	D	E	F	H	J					
1	2	3/8	600	0.45	4 1/8	3	1 1/2	1	3/4	3/8	1 1/16	9/16					
1 1/4	2 1/2			0.48	4 1/2	3 3/8	1 7/8	1 1/16					1 1/8				
1 1/2	2 3/4			0.51	4 3/4	3 5/8	2 1/8	1 1/8					1 1/8				
2	3 1/4	1/2	660	0.57	5 1/4	4 1/8	2 5/8	1 3/16	7/8	1/2	1 15/16	11/16					
2 1/2	3 3/4			1.00	6 1/4	4 7/8	3 1/8	1 3/8					1 1/8				
3	4 1/2			1.10	6 7/8	5 1/2	3 3/4	1 7/16					1 1/8				
3 1/2	5	5/8	700	1.40	7 1/2	6 1/8	4 1/4	1 5/8	1	1/2	2 9/16	3/4					
4	5 1/2			1.70	8 1/4	6 7/8	4 3/4	1 3/4					1 1/8				
5	7			2.60	9 11/16	8 1/16	5 13/16	2					1 1/8	5/8	3 7/16	7/8	
6	8 1/4	3/4	1,070	4.50	11 7/16	9 9/16	6 7/8	2 5/16	1 1/4	3/4	4	1					
8	10 1/2			1,350	7.20	14 1/16	11 15/16	8 7/8					2 13/16	1 1/2	7/8	5 1/8	1 1/8
10	12 3/4			1,730	9.50	16 9/16	14 1/16	11					3 3/8	1 3/4	1	6 3/8	1 1/8
12	14 3/4	7/8	2,400	15.90	17 15/16	15 13/16	12 1/2	3 7/8	2	1	7 7/16	1 1/4					
14	16 1/4			21.30	20 1/8	17 3/4	14 1/4	4 5/8					2 1/2	1 1/8	8 3/8	1 3/8	
16	18			3,970	31.90	22 1/8	19 3/4	16 1/4					5	2 5/8	1 1/4	9 7/16	1 1/2
18	20 1/4	1	4,200	35.50	24 1/2	21 3/4	18 1/4	5 7/16	2 3/4	1 1/4	10 1/2	1 1/2					
20	22 1/2			4,550	47.00	27 1/4	24 1/4	20 1/4					6	3	11 5/8	1 5/8	
24	26 1/2			6,160	76.30	32 1/8	28 7/8	24 1/4					7 3/16	3 5/8	1 1/2	14	1 3/4
30	32 1/2	1 1/2	7,290	129.90	39	35 1/2	30 1/4	8 15/16	4 1/2	1 3/4	17 7/16	2 7/16					

D/CI Roll Sizing	
D/CI Pipe Size	Fig. 171 Roller Size
3	4
4	5
6	6
8	8
10	10
12	14
14	16
16	18
18	20
20	24
24	30
30	No Recom.



**International Seismic Application Technology**  
 14848 E. Northam Street, La Mirada, CA 90638  
 877-999-4728 (Toll Free) 714-523-0845 (fax)  
 www.isatsb.com

*W V Jaeger*

Model Law Structural Engineer  
 NCEES No. 20675

Rev. 0  
 11/01/06

Page  
**H5.14**