

STEEL PIPE CLAMPS



Fig. 103

Offset Pipe Clamp

Size Range: 3/4" through 8"

Material: Carbon steel

Finish: Plain or Galvanized

Service: For use in supporting piping away from wall or floor.

Maximum Temperature: Plain 650° F, Galvanized 450° F

Ordering: Specify pipe size, figure number, name and finish

Service: For use in supporting horizontal piping away from the wall or floor (not to be used as a riser type support)

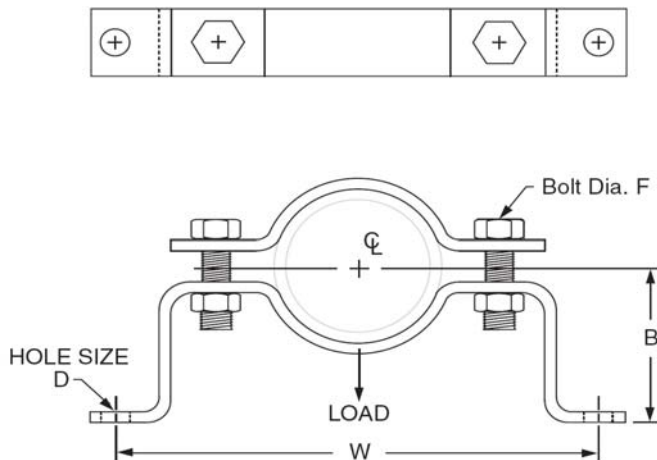


Fig. 103: Loads (lbs) • Weight (lbs) • Dimensions (in)

Pipe Size	Max Load	Weight	W	B	D	Bolt Dia. F
3/4	190	1.50	8 ³ / ₄	2 ¹ / ₂	7/16	3/8
1		1.60	9 ¹ / ₄	2 ⁵ / ₈		
1 ¹ / ₄		1.70	9 ³ / ₄	2 ¹³ / ₁₆		
1 ¹ / ₂		1.80	10	2 ¹⁵ / ₁₆		
2	420	2.70	11 ¹ / ₄	3 ³ / ₁₆	9/16	1/2
2 ¹ / ₂		2.90	11 ³ / ₄	3 ⁷ / ₁₆		
3		3.20	12 ⁷ / ₈	3 ³ / ₄		
4	610	4.60	13 ⁷ / ₈	4 ¹ / ₄	1 ¹ / ₁₆	5/8
5		7.30	15 ⁵ / ₈	4 ³ / ₄		
6	870	7.80	16 ³ / ₄	5 ⁵ / ₁₆	1 ¹ / ₁₆	5/8
8		9.00	18 ³ / ₄	6 ⁵ / ₁₆		



International Seismic Application Technology
 14848 East Northam Street, La Mirada, CA 90638
 877-999-4728(Toll Free) 714-522-0845(Fax)
 www.isatsb.com

W V Jansen

Model Law Structural Engineer
 NCEES No.20675

Rev. 0
 11/1/06

Page
H5.23