

H-BLOCK SPECIAL FEATURES

- 100% Recycled Rubber
- LEED Certifiable
- Independent Laboratory Tested
- Resistance to Freeze and Thaw
- No Deterioration
- All 4 Corners coated with reflective safety orange for maximum visibility
- Eliminates need for roof penetrations
- Dampens Vibrations
- Compatible with most rooftop materials

The channel for H-Block support assemblies includes a variety of options. The strut can be made in special lengths, finishes, and alloys including Aluminum, Stainless Steel both 304 & 316, PVC coated, Powder coated, Zinc Trivalent Chromium, Pre-Galvanized and Hot Dipped Galvanized.



Our product line has systems to support all of the following applications:

- Solar Racking
- Pipe & Conduit supports
- Duct supports
- HVAC supports
- Cable Tray Systems
- Air Conditioning supports
- Roof Walkway supports

www.anvilintl.com



CORPORATE OFFICES

2 Holland Way
Exeter, NH 03833
Tel: 603-418-2800 • Fax: 603-418-2833

CUSTOMER SERVICE CENTERS

United States

University Park, IL
Tel: 708-885-3000 • Fax: 708-534-5441
Toll Free: 1-800-301-2701

Irving, TX

Tel: 972-871-1206 • Fax: 972-641-8946
Toll Free: 1-800-451-4414

Canada

Simcoe, Ontario
Tel: 519-426-4551 • Fax: 519-426-5509

Europe and Middle East

Tel: +31-53-5725570 • Fax: +31-53-5725579
International Customer Service
Tel: +1-708-885-3000 • Fax: +1-708-534-5441

Mexico, Puerto Rico and Latin America

International Customer Service
Tel: +1-708-885-3000 • Fax: +1-708-534-5441

#122 / Revision Date: 6.21.13 / ©2013

www.anvilintl.com



HAYDON® H-BLOCK Rooftop Support Systems



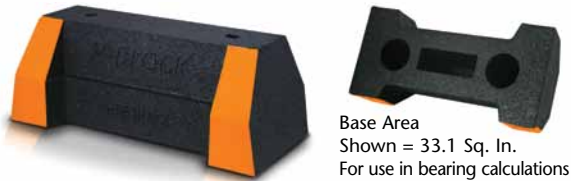
100% Recycled Rubber
LEED® Certifiable
UV Resistant
Made in USA



H-BLOCK SUPPORTS

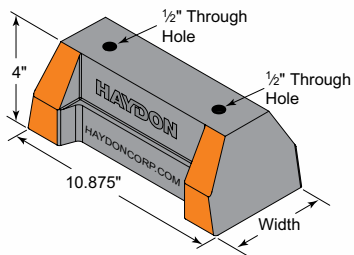
Anvil's new H-Block Supports will provide a full complement of products to support gas and refrigeration piping, plumbing, multiple lines, electrical conduit, ductwork, HVAC and many other applications. H-Block roof supports are pre-assembled and are suitable for installation on most types of roofing material and other flat surfaces. Please visit www.anvilintl.com to view or download our H-Block brochure that provides product information, including load capacities.

HBS-BASE SERIES



MATERIAL - 100% recycled rubber, UV resistant

The HBS-Base Series is UV resistant and suitable for installation on most types of roofing material or other flat surfaces. Can be used as a curb (sleeper) replacement. Screw fasteners can be used to attach one or two hole pipe straps or a piece of strut (not included).



HBS-Base Series

Model No.	Height	Width	Base Length	Weight	Uniform Load Capacity (Lbs) *
HBS-Standard-Base Only	4" (101mm)	5" (127mm)	10-7/8" (276mm)	4.80 lbs.	2,500 *

* This load is only for the capacity of the components in this assembly. Please consult roofing manufacturer or engineer for roof load capacity

Model No. HBS-DSFW Fixed Width Duct Support

Duct Support with Fixed Width and Adjustable Height



Model No. HBS-DSAW Adjustable Width Duct Support

Duct Support with Adjustable Width and Height



Model No. HBS-CES-Medium

Raised Bridge Length with 2 HBS Bases 1 5/8" H-132 Pre-Galv. Steel Channel



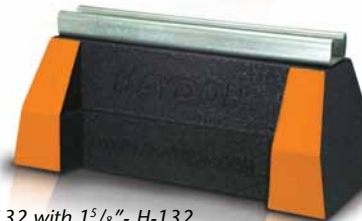
Model No. HBS-CES-Heavy

Raised Bridge Length with 2 HBS Bases 3 1/4" H-132-A Pre-Galv. Steel Channel



Model No. HBS Series - H-164

HBS-Support with H-164 1 3/16" Pre-Galv. Steel Channel



Not Shown: HBS Series - H-132 with 1 5/8" H-132 Steel Channel and HBS-6 Series-H-122 with 2 7/16" H-122 Steel Channel.

Model No. HBS Roller Series

HBS-Base with 1 5/8" H-132 Pre-Galv. Steel Channel and Rollers



Model No. HBS-CE Extension Series

HBS-Support with Threaded Rod Extension and 1 3/16" H-164 Pre-Galv. Steel Channel



Model No. HBS-CB Bridge Series

Bridge Length Support with 2 HBS Bases and 1 5/8" H-132 Pre-Galv. Steel Channel



Please consult roofing manufacturer or engineer for roof load capacities.

