



Figure 7091, Groove by Groove

Gruvlok® DI-LOK™ CTS Groove x IPS Groove Dielectric Fitting

The Gruvlok Fig. 7091 DI-LOK Fitting inhibits the formation of a galvanic cell between grooved end steel pipe and copper tube.

The separation of copper from steel by the fitting virtually eliminates the galvanic cell created by the dissimilar metals. The Gruvlok Figure 6400 and 7400 Rigid Couplings possess tines which create an electrical connection on the outside of the fitting providing a means for transmission of stray current outside of the fluid media effectively eliminating accelerated corrosion of the wetted metals.

The DI-LOK Fitting is designed for use at temperatures from -40°F to 230°F (-40°C to 110°C) and pressures to 300 psig (20.7 bar) in a wide range of applications.

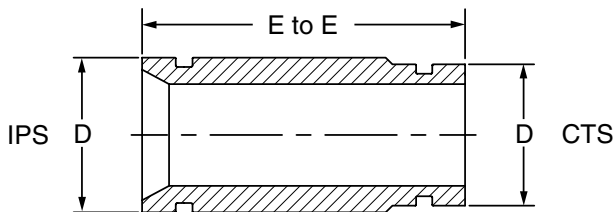


FIGURE 7091 DI-LOK NIPPLE

Nominal Size	Copper (CTS)	Steel (IPS)	End to End	Approx. Wt. Ea.
	D Actual	D Actual		
IPS	In./mm	In./mm	In./mm	Lbs./Kg
2	2.125 53.98	2.375 60.33	4.0 101.60	1.32 .60
2½	2.625 66.68	2.875 73.03	6.0 152.40	2.85 1.29
3	3.125 79.38	3.500 88.90	6.0 152.40	4.27 1.94
4	4.125 104.78	4.500 114.30	6.0 152.40	5.62 2.55
6	6.125 155.58	6.625 168.28	6.0 152.40	9.66 4.38

For installation and assembly of grooved-end connections, see "Fig. 6400 Gruvlok Rigid Coupling", "Fig. 7400 Gruvlok Rigidlite Coupling" and "Fig. 7012 Gruvlok Flange".

Material Specifications:

- **Housing:**
Seamless Carbon Steel to ASTM A106
- **Coating:**
Nylon conforming to ANSI/NSF-61